

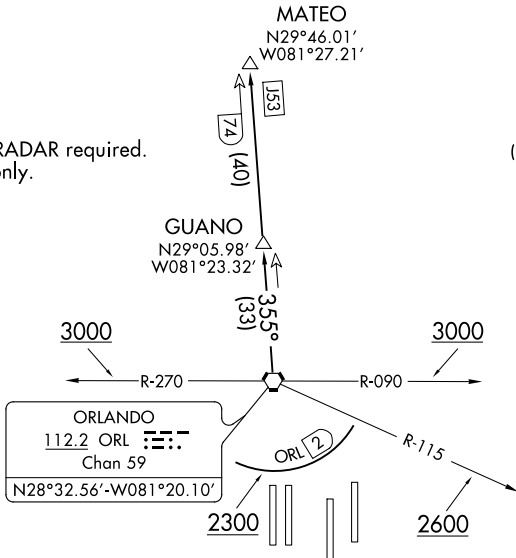
# JAGUAR SIX DEPARTURE

ORLANDO, FLORIDA

**TOP ALTITUDE:  
5000**

D-ATIS DEP  
120.525  
CLNC DEL  
134.7 341.7  
CPDLC  
GND CON  
126.4 (East)  
121.8 (West)  
ORLANDO TOWER  
118.45 253.5  
(Rwys 17L-35R, 17R-35L)  
124.3 253.5  
(Rwys 18L-36R, 18R-36L)

NOTE: DME and RADAR required.  
NOTE: Turbojets only.



### TAKEOFF MINIMUMS

Rwys 17L/R, 18L/R, 35L/R, 36L/R: Standard.

NOTE: Chart not to scale.

### DEPARTURE ROUTE DESCRIPTION

TAKEOFF RUNWAYS 17L/R, 18L/R: Climb on heading as assigned, thence . . . .

TAKEOFF RUNWAYS 35L/R: Climb on heading as assigned. Cross ORL VORTAC R-115 at or above 2600, cross ORL VORTAC R-090 or R-270 at or above 3000, thence . . . .

TAKEOFF RUNWAYS 36L/36R: Climb on heading as assigned. Cross 2 DME south of ORL VORTAC at or above 2300, cross ORL VORTAC R-090 or R-270 at or above 3000, thence . . . .

. . . . for vectors to ORL VORTAC R-355 to GUANO, then on ORL VORTAC R-355 to MATEO. Maintain 5000. Expect further clearance to filed altitude/flight level 10 minutes after departure.

SE-3, 09 SEP 2021 to 07 OCT 2021

SE-3, 09 SEP 2021 to 07 OCT 2021