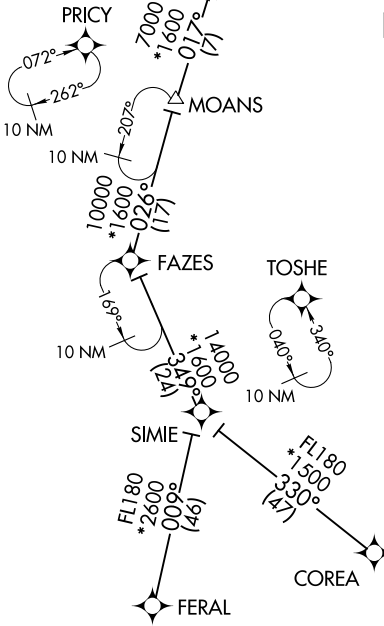
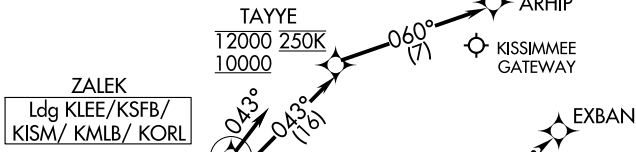
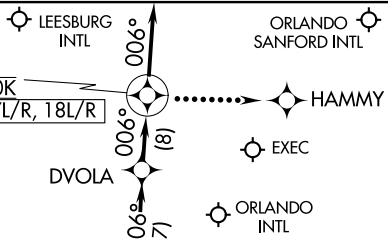


JOKRS ONE ARRIVAL (RNAV)

ORLANDO, FLORIDA

ORLANDO APP CON
 134.05 339.8
 ISM ATIS
 128.775
 MCO D-ATIS ARR
 121.25
 MLB ATIS
 132.55
 ORL ATIS
 127.25
 SFB ATIS
 125.975



- NOTE: RADAR required.
- NOTE: RNAV 1.
- NOTE: DME/DME/IRU or GPS required.
- NOTE: Descend via MACH number until intercepting 280K. Maintain 280K until slowed by the STAR or assigned by ATC.
- NOTE: Expect "descend via" clearance and landing direction (north or south) by ARTCC. For vertical navigation planning, landing south, select Rwy 18R, landing north, select Rwy 36L.
- NOTE: MCO approach will issue landing runway.
- NOTE: MCO Landing North: expect 250K at MOANS.
- NOTE: MCO Landing North: expect RADAR vectors prior to LORRA.
- NOTE: MCO Landing South: expect RADAR vectors prior to LYENS.
- NOTE: Landing all satellite airports, expect RADAR vectors prior to JOKRS.
- NOTE: COREA and MOANS Transitions, ATC assigned only.
- NOTE: Jet aircraft only.

NOTE: Chart not to scale.

SE-3, 09 SEP 2021 to 07 OCT 2021

SE-3, 09 SEP 2021 to 07 OCT 2021

JOKRS ONE ARRIVAL (RNAV)

ORLANDO, FLORIDA