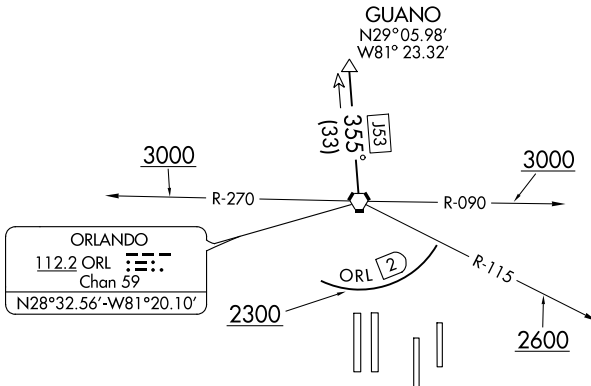


MCCOY TWO DEPARTURE

TOP ALTITUDE:
5000

D-ATIS DEP
120.525
CLNC DEL
134.7 341.7
CPDLC
GND CON
126.4 (East)
121.8 (West)
ORLANDO TOWER
118.45 253.5
(Rwys 17L-35R, 17R-35L)
124.3 253.5
(Rwys 18L-36R, 18R-36L)

TAKEOFF MINIMUMS
Rwys 17L/R, 18L/R, 35L/R, 36L/R: Standard.



NOTE: DME and RADAR required.
NOTE: Turbojets only.

NOTE: Chart not to scale.



DEPARTURE ROUTE DESCRIPTION

TAKEOFF RUNWAYS 17L/R, 18L/R: Climb on heading as assigned. Thence. . . .

TAKEOFF RUNWAYS 35L/R, 36L/R: Climb on heading as assigned. Cross 2 DME south of ORL VORTAC at or above 2300, cross ORL VOTRAC R-115 at or above 2600, cross ORL VORTAC R-090 or R-270 at or above 3000. Thence. . . .

. . . .for vectors to ORL VORTAC R-355 to GUANO. Maintain 5000. Expect further clearance to filed altitude/flight level 10 minutes after departure.