

MZULO ONE DEPARTURE (RNAV)

SE-3, 09 SEP 2021 to 07 OCT 2021

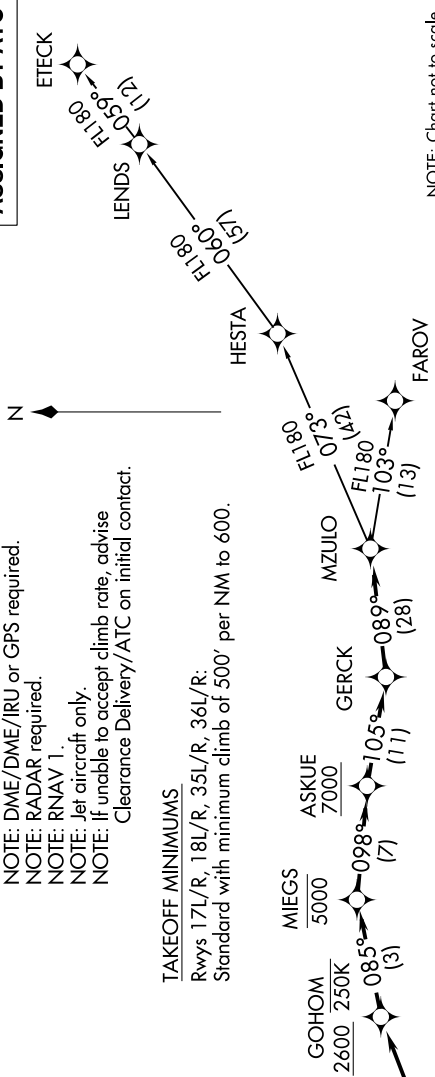
D-ATIS DEP
120.525
CLNC DEL
134.7 341.7
CPDLC
GND CON
126.4 (East)
121.8 (West)
ORLANDO INTL TOWER
118.45 253.5
(Rwys 17L-35R, 17R-35L)
124.3 253.5
(Rwys 18L-36R, 18R-36L)
ORLANDO DEP CON
124.8 307.0

TOP ALTITUDE:
ASSIGNED BY ATC

NOTE: DME/DME/IRU or GPS required.
NOTE: RADAR required.
NOTE: RNAV 1.
NOTE: Jet aircraft only.
NOTE: If unable to accept climb rate, advise Clearance Delivery/ATC on initial contact.

TAKEOFF MINIMUMS

Rwys 17L/R, 18L/R, 35L/R, 36L/R:
Standard with minimum climb of 500' per NM to 600.



DEPARTURE ROUTE DESCRIPTION

SEE ADDITIONAL REQUIREMENTS ON AAUP

TAKEOFF RUNWAYS 17L/R: Climb on heading 185° to 600, then on heading 176°, or as assigned by ATC, for vectors to GERCK, thence ...
 TAKEOFF RUNWAYS 18L/R: Climb on heading 185°, then on heading 141°, or as assigned by ATC, for vectors to GERCK, thence ...
 TAKEOFF RUNWAYS 35L/R, 36L/R: Climb on heading 005° to intercept course 075° to cross GOHOM at or above 2600 and at or below 250K, then on track 085° to cross MIEGS at or below 5000, then on track 098° to cross ASKUE at or above 7000, then on track 105° to GERCK, thence ...
 ... on track 089° to MZULO. Maintain ATC assigned altitude. Expect filed altitude 10 minutes after departure.

ETECK TRANSITION (MZULO1.ETECK)
 FAROV TRANSITION (MZULO1.FAROV)

SE-3, 09 SEP 2021 to 07 OCT 2021

MZULO ONE DEPARTURE (RNAV)