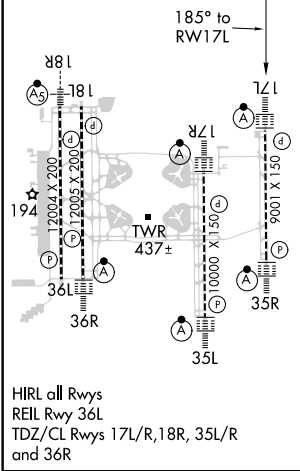
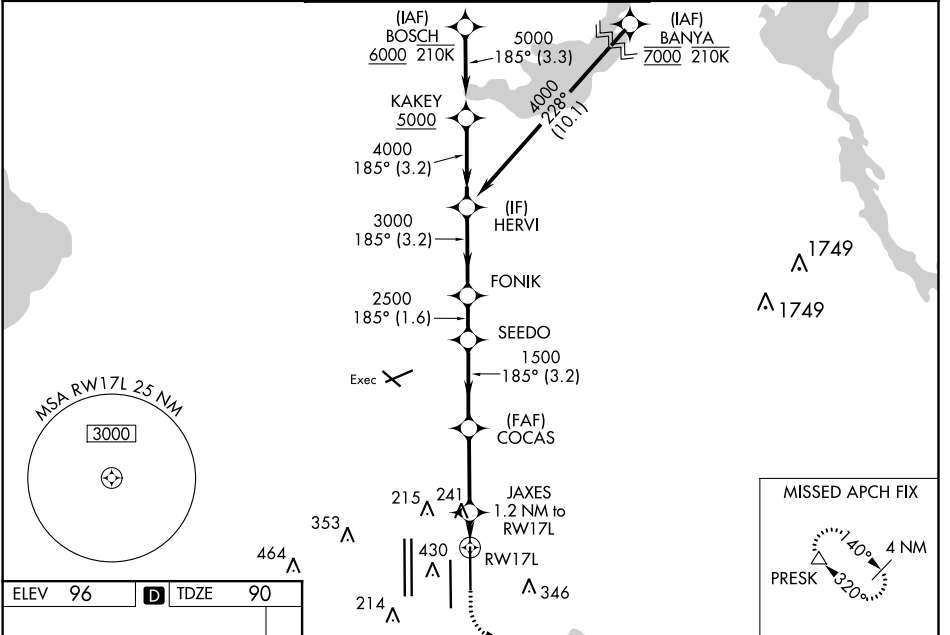


WAAS CH <b>69214</b> <b>W17B</b>	APP CRS <b>185°</b>	Rwy Idg TDZE Apt Elev	<b>9000</b> <b>90</b> <b>96</b>
--	------------------------	-----------------------------	---------------------------------------

# RNAV (GPS) RWY 17L

ORLANDO INTL (MCO)

RNP APCH.		ORLANDO TOWER		GND CON	CLNC DEL	MISSED APPROACH: Climb to 500 then climbing left turn to 3000 direct PRESK and hold, continue climb-in-hold to 3000.
<p>▼ LNAV procedure NA during simultaneous operations. Use of FD or AP required during simultaneous operations. Simultaneous approach authorized with Rwy 17R and 18L, or Rwy 17R and Rwy 18R. For uncompensated Baro-VNAV systems, LNAV/VNAV NA below 1°C or above 54°C. Bright lights on highway midway between Rwy 17L and 17R may be mistaken for runway lights. For inop ALSF, increase LNAV Cats C/D visibility to RVR 6000.</p>		<p>ALSF-2</p>		<p>126.4 (East)</p> <p>121.8 (West)</p>	<p>134.7</p> <p>341.7</p>	
D-ATIS	ORLANDO APP CON	ORLANDO TOWER		GND CON	CLNC DEL	CPDLC
ARR <b>121.25</b>	<b>124.8 307.0</b>	<p><b>118.45 253.5</b> (Rwys 17L-35R, 17R-35L)</p> <p><b>124.3 253.5</b> (Rwys 18L-36R, 18R-36L)</p>		<p>126.4 (East)</p> <p>121.8 (West)</p>	<p>134.7</p> <p>341.7</p>	



ELEV 96	<b>D</b>	TDZE 90		
<p>BOSCH KAKEY HERVI FONIK SEEDO COCAS JAXES RW17L</p> <p>6000 5000 4000 3000 2500 1500 540</p> <p>GP 3.00° TCH 55</p> <p>3.3 3.2 NM 3.2 NM 1.6 NM 3.2 NM 3 NM 1.2 NM</p>				
CATEGORY	A	B	C	D
LPV DA		290/18	200 (200-1/2)	
LNAV/VNAV DA		513/40	423 (500-3/4)	
LNAV MDA	500/24	410 (500-1/2)	500/40	410 (500-3/4)
<b>C</b> CIRCLING	740-1	644 (700-1)	740-1 3/4	740-2
			644 (700-1 3/4)	644 (700-2)

SE-3, 09 SEP 2021 to 07 OCT 2021

SE-3, 09 SEP 2021 to 07 OCT 2021