

WAAS CH 66012 W18A	APP CRS 185°	Rwy Idg 12004 TDZE 96 Apt Elev 96
--	------------------------	--

RNAV (GPS) RWY 18L

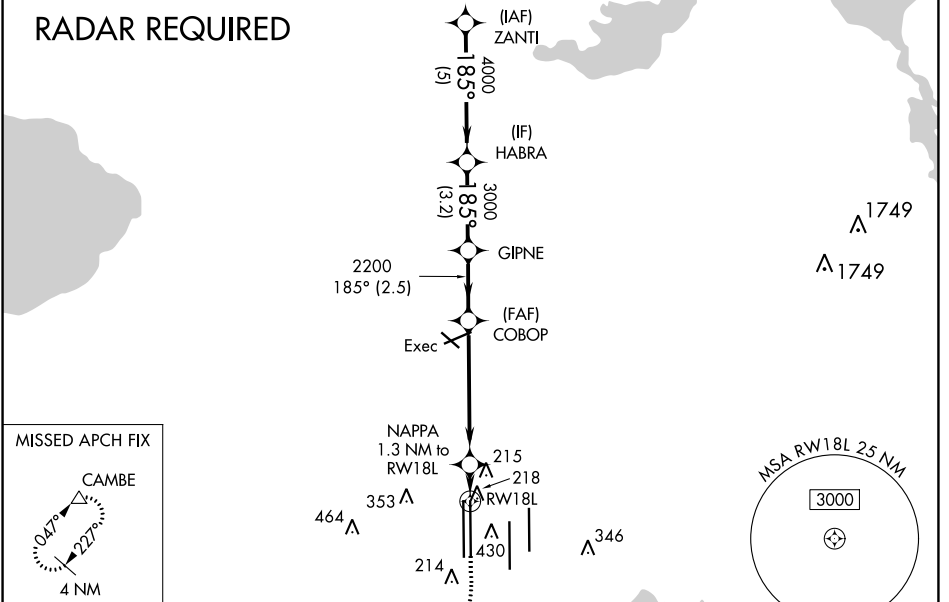
ORLANDO INTL (MCO)

▽ For uncompensated Baro-VNAV systems, LNAV/VNAV NA below -1°C (31°F) or above 54°C (130°F). DME/DME RNP-0.3 NA. Simultaneous approach authorized with Rwy 17L/R. LNAV procedure NA during simultaneous operations. Use of FD or AP providing RNAV track guidance required during simultaneous operations.

MISSED APPROACH:
Climb to 500 then climbing right turn to 4000 direct CAMBE and hold, continue climb-in-hold to 4000.

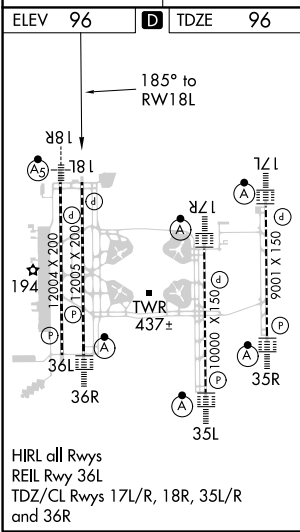
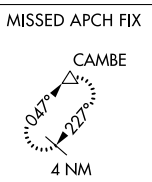
D-ATIS ARR 121.25 DEP 120.525	ORLANDO APP CON 124.8 307.0	ORLANDO TOWER 118.45 253.5 (Rwys 17L-35R, 17R-35L) 124.3 253.5 (Rwys 18L-36R, 18R-36L)	GND CON 126.4 (East) 121.8 (West)	CLNC DEL 134.7 341.7	CPDLC
---	---------------------------------------	--	---	--	-------

RADAR REQUIRED



SE-3, 09 SEP 2021 to 07 OCT 2021

SE-3, 09 SEP 2021 to 07 OCT 2021



VGSI and RNAV glidepath not coincident (VGSI Angle 3.00/TCH 70).

	ZANTI	HABRA	GIPNE	COBOP	NAPPA	RWY 18L
ELEV	4000	4000	3000	2200	215	3000
GP	3.00°	185°	3.00°	3.00°	3.00°	3.00°
TCH	55	55	55	55	55	55
Distance	5 NM	3.2 NM	2.5 NM	5.2 NM	1.3 NM	
Category	A	B	C	D		
LPV DA		296/40	200 (200-¾)			
LNAV/VNAV DA		398/50	302 (400-1)			
LNAV MDA	480/55	384 (400-1)		480/60	384 (400-1¼)	
CIRCLING	740-1	644 (700-1)		740-1¾	644 (700-1¾)	740-2
					644 (700-2)	