

WAAS CH <b>63212</b> <b>W18B</b>	APP CRS <b>185°</b>	Rwy Idg <b>12004</b> TDZE <b>94</b> Apt Elev <b>96</b>
--	------------------------	--

# RNAV (GPS) RWY 18R

ORLANDO INTL (MCO)

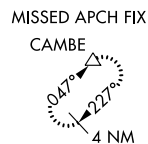
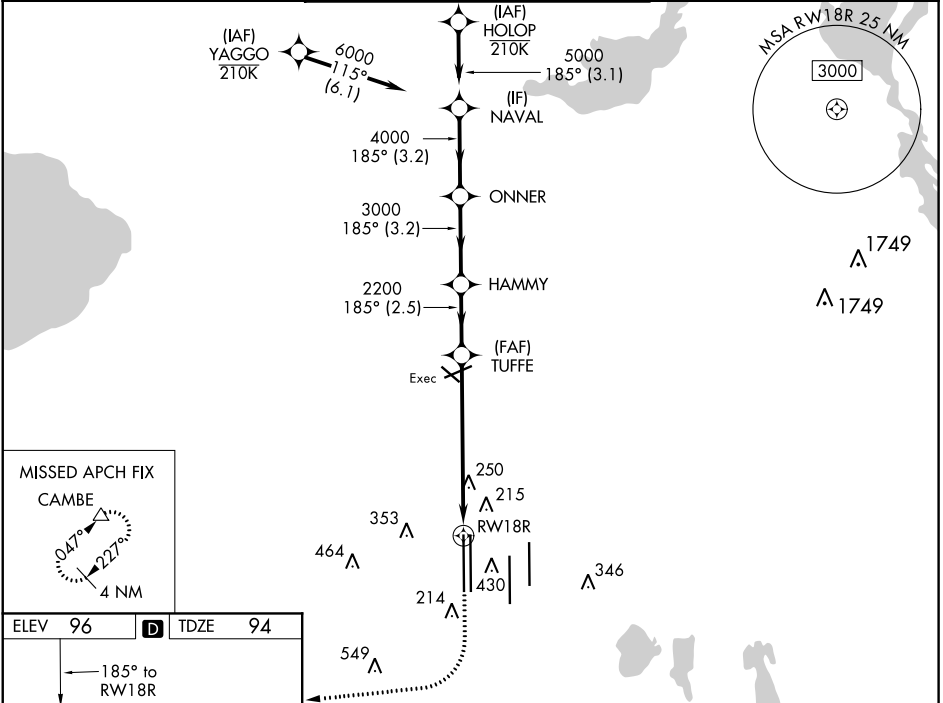
RNP APCH

▼ LNAV procedure NA during simultaneous operations. Use of FD or AP required during simultaneous operations. Simultaneous approach authorized with Rwy 17L/R. For uncompensated Baro-VNAV systems, LNAV/VNAV NA below 1°C or above 54°C.

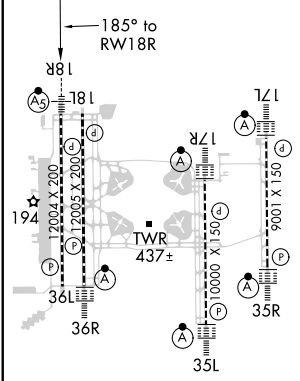


MISSED APPROACH: Climb to 500 then climbing right turn to 4000 direct CAMBE and hold, continue climb-in-hold to 4000.

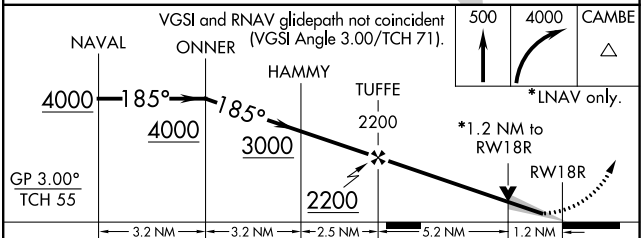
D-ATIS ARR <b>121.25</b> DEP <b>120.525</b>	ORLANDO APP CON <b>124.8 307.0</b>	ORLANDO TOWER <b>118.45 253.5</b> (Rwys 17L-35R, 17R-35L) <b>124.3 253.5</b> (Rwys 18L-36R, 18R-36L)	GND CON <b>126.4</b> (East) <b>121.8</b> (West)	CLNC DEL <b>134.7</b> <b>341.7</b>	CPDLC
---	---------------------------------------	--	---	--	-------



ELEV <b>96</b>	<b>D</b>	TDZE <b>94</b>
----------------	----------	----------------



HIRL all Rwys  
REIL Rwy 36L  
TDZ/CL Rwys 17L/R, 18R, 35L/R and 36R



CATEGORY	A	B	C	D
LPV DA		294/18	200 (200-½)	
LNAV/VNAV DA		390/24	296 (300-½)	
LNAV MDA	540/24	446 (500-½)	540/45	446 (500-¾)
<b>C</b> CIRCLING	740-1	644 (700-1)	740-1¾ 644 (700-1¾)	740-2 644 (700-2)

SE-3, 09 SEP 2021 to 07 OCT 2021

SE-3, 09 SEP 2021 to 07 OCT 2021