

WAAS CH 58003 W14A	APP CRS 136°	Rwy Idg 5502 TDZE 583 Apt Elev 583
--	------------------------	---

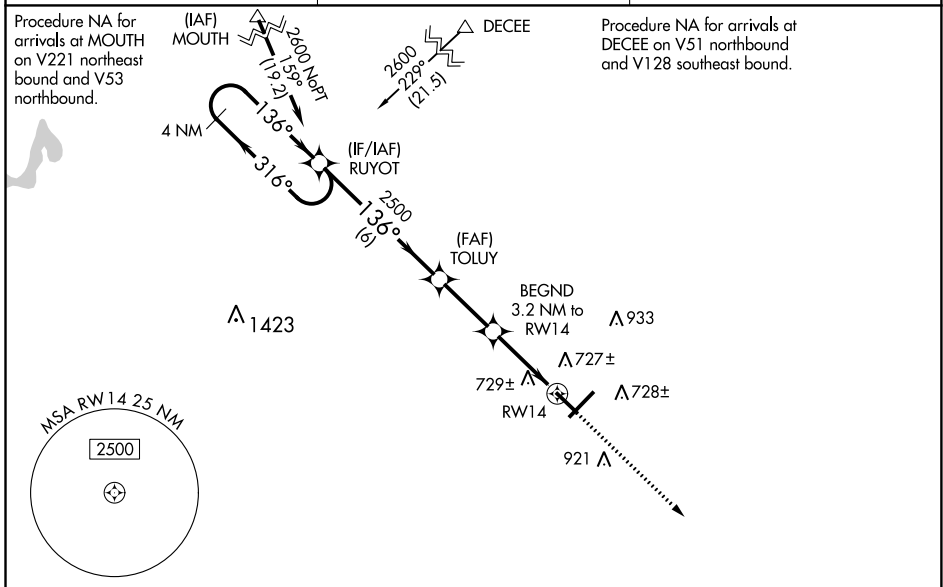
RNAV (GPS) RWY 14

FREEMAN MUNI (SE.R)

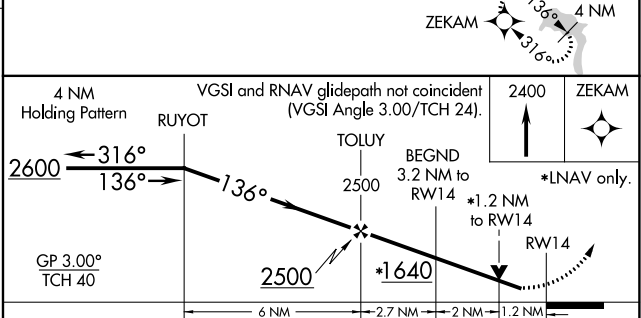
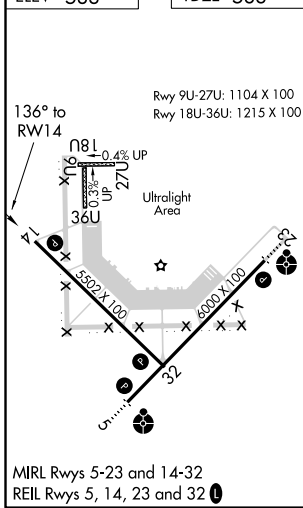
NA Baro-VNAV and VDP NA when using Louisville Muhammad Ali Intl altimeter setting. For uncompensated Baro-VNAV systems, LNAV/VNAV NA below -16°C (4°F) or above 54°C (130°F). When local altimeter setting not received, use Louisville Muhammad Ali Intl altimeter setting and increase all DA 117 feet and all MDA 120 feet; increase LPV all Cats, LNAV/VNAV all Cats and Circling Cat C/D visibility ½ mile, and LNAV Cat C/D visibility ¼ mile. DME/DME RNP-0.3 NA. Helicopter visibility reduction below ¾ SM NA.

MISSED APPROACH:
Climb to 2400 direct ZEKAM and hold.

AWOS-3 119.425	INDIANAPOLIS CENTER 124.775 269.45	UNICOM 122.8 (CTAF)
--------------------------	--	-------------------------------



ELEV 583	TDZE 583
-----------------	-----------------



CATEGORY	A	B	C	D
LPV DA		860-1	277 (300-1)	
LNAV/VNAV DA		1037-1½	454 (500-1½)	
LNAV MDA	980-1	397 (400-1)	980-1½	397 (400-1½)
C CIRCLING	1040-1 457 (500-1)	1080-1 497 (500-1)	1300-2 717 (800-2)	1300-2¼ 717 (800-2¼)

EC-2, 09 SEP 2021 to 07 OCT 2021

EC-2, 09 SEP 2021 to 07 OCT 2021