

WAAS CH <b>48903</b> <b>W23A</b>	APP CRS <b>226°</b>	Rwy ldg TDZE Apt Elev	<b>6000</b> <b>580</b> <b>583</b>
--	------------------------	-----------------------------	---

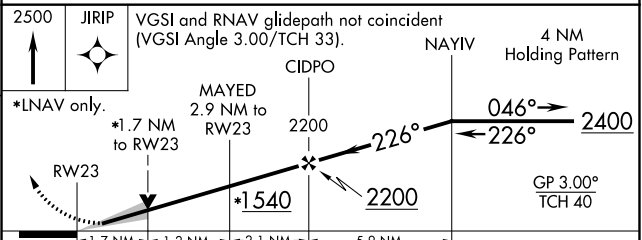
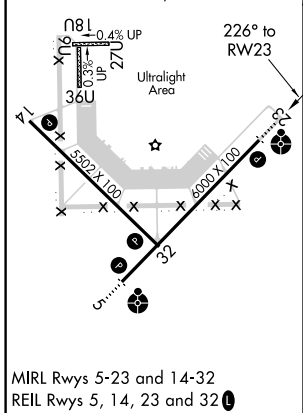
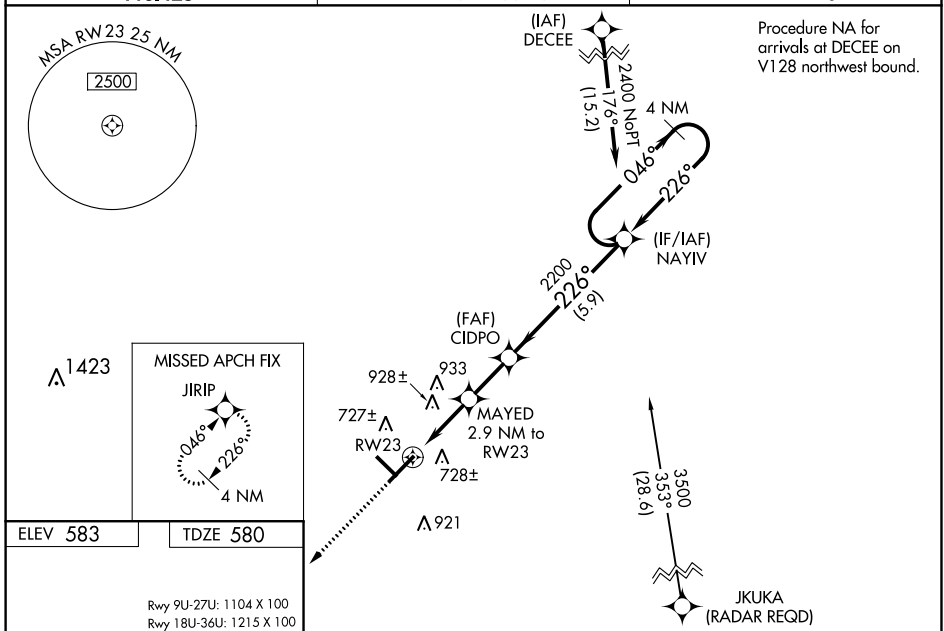
# RNAV (GPS) RWY 23

FREEMAN MUNI (SER)

**NA** Baro-VNAV NA when using Louisville Muhammad Ali Intl altimeter setting. For uncompensated Baro-VNAV systems, LNAV/VNAV NA below -16°C (4°F) or above 54°C (130°F). When local altimeter setting not received, use Louisville Muhammad Ali Intl altimeter setting and increase all DA 117 feet and all MDA 120 feet; increase LPV all Cats, LNAV/VNAV all Cats and LNAV Cat C/D visibility 3/8 mile, and Circling Cat C/D visibility 1/2 mile. For inoperative ODALS, increase LNAV/VNAV all Cats visibility to 3/8, and LNAV Cat C/D visibility to 1/8. DME/DME RNP-0.3 NA. VDP NA with Louisville Muhammad Ali Intl altimeter setting. For inoperative ODALS when using Louisville Muhammad Ali Intl altimeter setting, increase LNAV/VNAV all Cats visibility to 1/8, and LNAV Cat C/D visibility to 2/8.

ODALS  
MISSED APPROACH:  
Climb to 2500 direct JIRIP and hold.

AWOS-3 <b>119.425</b>	INDIANAPOLIS CENTER <b>124.775 269.45</b>	UNICOM <b>122.8 (CTAF)</b>
--------------------------	--	-------------------------------



CATEGORY	A	B	C	D
LPV DA		830-3/4	250 (300-3/4)	
LNAV/VNAV DA		858-3/4	278 (300-3/4)	
LNAV MDA	1160-3/4	580 (600-3/4)	1160-1 1/2	580 (600-1 1/2)
<b>CIRCLING</b>	1160-1	577 (600-1)	1300-2	1300-2 1/4

EC-2, 09 SEP 2021 to 07 OCT 2021

EC-2, 09 SEP 2021 to 07 OCT 2021