

WAAS CH <b>99403</b> <b>W32A</b>	APP CRS <b>316°</b>	Rwy Idg TDZE Apt Elev	<b>5502</b> <b>574</b> <b>583</b>
----------------------------------------	------------------------	-----------------------------	-----------------------------------------

# RNAV (GPS) RWY 32

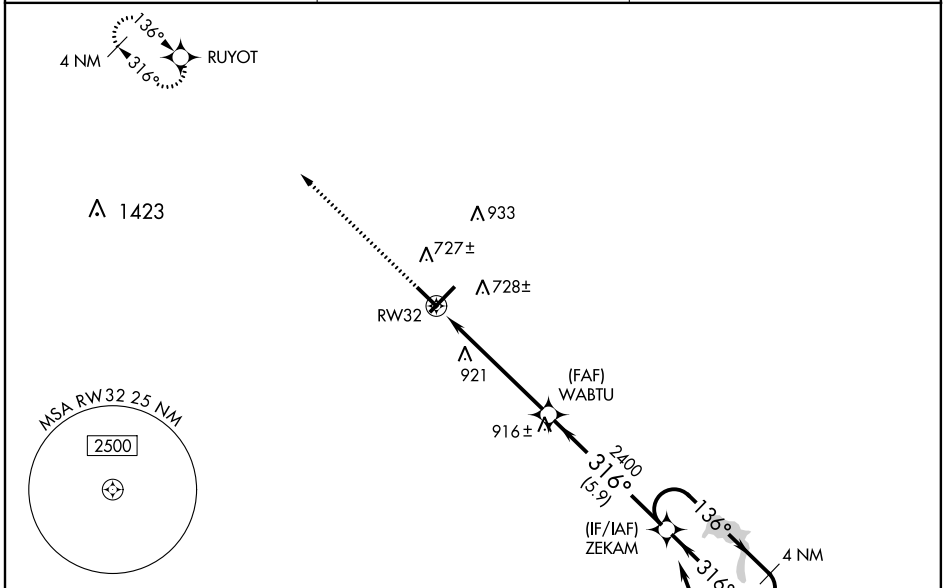
FREEMAN MUNI (SE.R)

RNP APCH

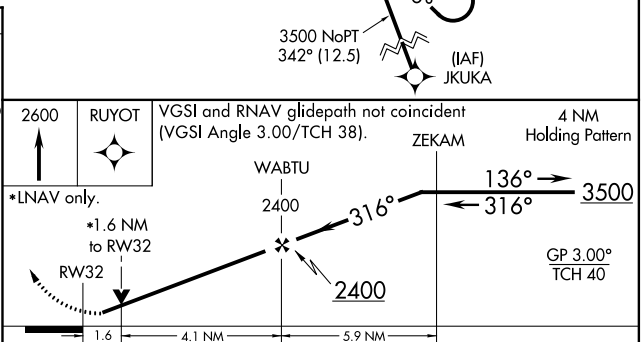
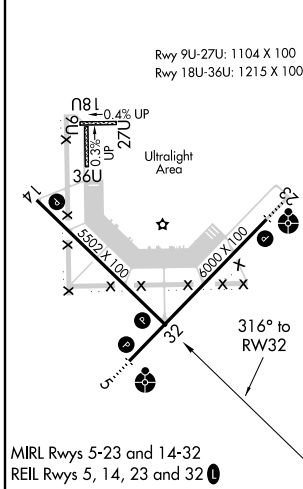
Baro-VNAV NA when using Louisville Muhammad Ali Intl altimeter setting. When local altimeter setting not received, use Louisville Muhammad Ali Intl altimeter setting and increase all DA 117 feet and all MDA 120 feet; increase LPV all Cats, LNAV/VNAV all Cats and LNAV Cat C/D visibility  $\frac{3}{8}$  mile and Circling Cat C/D visibility  $\frac{1}{2}$  mile. VDP NA with Louisville Muhammad Ali Intl altimeter setting. For uncompensated Baro-VNAV systems, LNAV/VNAV NA below  $-16^{\circ}\text{C}$  or above  $54^{\circ}\text{C}$ . Rwy 32 helicopter visibility reduction below  $\frac{3}{4}$  SM NA.

MISSED APPROACH:  
Climb to 2600 direct RUYOT and hold.

AWOS-3 <b>119.425</b>	INDIANAPOLIS CENTER <b>124.775 269.45</b>	UNICOM <b>122.8 (CTAF) 0</b>
--------------------------	----------------------------------------------	---------------------------------



ELEV 583	TDZE 574
----------	----------



CATEGORY	A	B	C	D
LPV DA		859-1	285 (300-1)	
LNAV/VNAV DA		853-1	279 (300-1)	
LNAV MDA	1140-1	566 (600-1)	1140-1 $\frac{5}{8}$	566 (600-1 $\frac{5}{8}$ )
<input checked="" type="checkbox"/> CIRCLING	1140-1	557 (600-1)	1300-2 717 (800-2)	1300-2 $\frac{1}{4}$ 717 (800-2 $\frac{1}{4}$ )

EC-2, 09 SEP 2021 to 07 OCT 2021

EC-2, 09 SEP 2021 to 07 OCT 2021