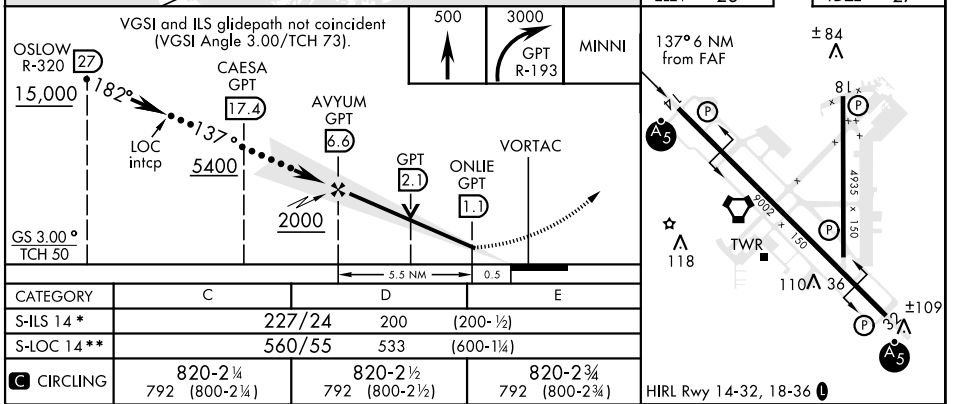
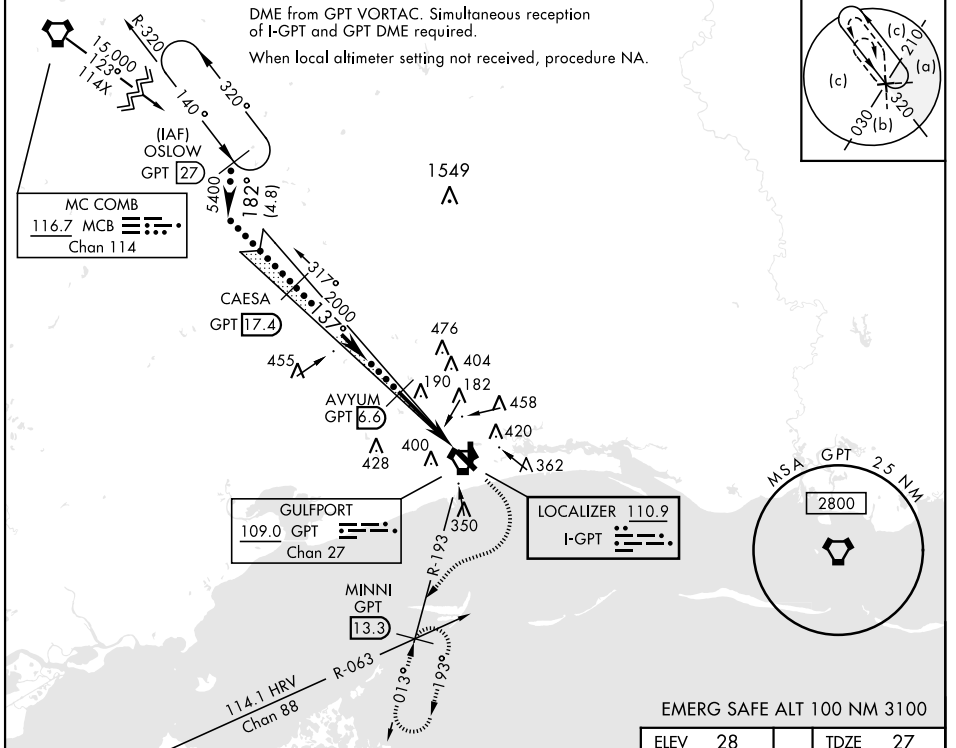


HI-ILS Y or LOC Y RWY 14

LOC I-GPT 110.9	APCH CRS 137°	Rwy Idg TDZE Arpt Elev 9002 27 28	AL-576 [USAF]	GULFPORT-BILOXI INTL (KGPT)
---------------------------	-------------------------	---	---------------	-----------------------------

RADAR or DME required.			MISSED APPROACH: Climb to 500, then climbing right turn to 3000 on GPT VORTAC R-193 to MINNI/ GPT 13.3 DME and hold.
* When ALS inop, increase RVR to 40. RVR 18 authorized with use of FD or AP or HUD to DA. ** When ALS inop, increase vis to 1½ miles.			

ATIS ★ 119.45	GULFPORT APP CON 124.6 354.1 130°-309° 127.5 254.25 310°-129°	GULFPORT TOWER ★ 123.7 CTAF 339.8	GND CON 120.4 348.6	ASR
-------------------------	---	--	-------------------------------	-----



HI-ILS Y or LOC Y RWY 14

SC-4, 09 SEP 2021 to 07 OCT 2021

SC-4, 09 SEP 2021 to 07 OCT 2021

