

HI-TACAN Y RWY 14

VORTAC GPT 109.0 Chan 27	APCH CRS 140°	Rwy Idg TDZE Arpt Elev 9002 27 28
--	-------------------------	---

AL-576 [USAF]

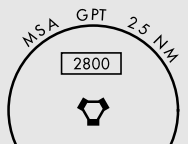
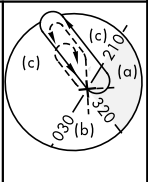
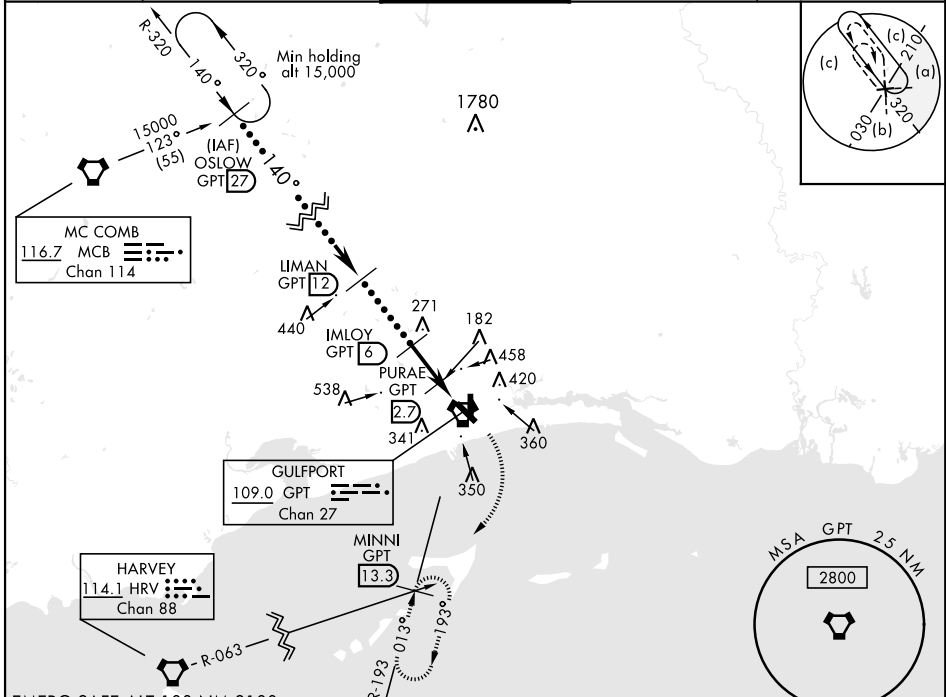
GULFPORT-BILOXI INTL (KGPT)

⚠ * When ALS inop, increase RVR to 6000.
⚠ ** When ALS inop, increase vis to 1 3/8.

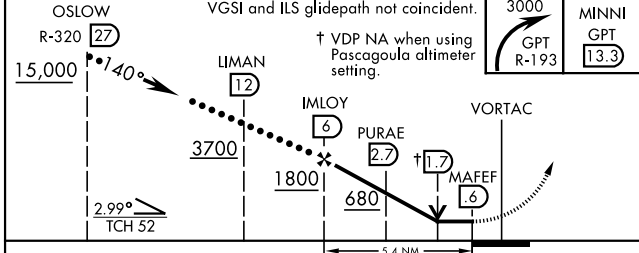
MALSR

MISSED APPROACH: Climbing right turn to 3000 on GPT R-193 to MINNI/13.3 DME and hold.

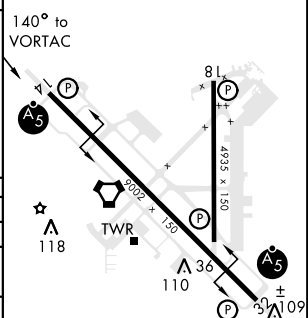
ATIS ★ 119.45	GULFPORT APP CON 124.6 354.1 130°-309° 127.5 254.25 310°-129°	GULFPORT TOWER ★ 123.7 CTAF 0 339.8	GND CON 120.4 348.6	ASR
-------------------------	---	--	-------------------------------	-----



EMERG SAFE ALT 100 NM 3100



ELEV 28	TDZE 27
---------	---------



CATEGORY	C	D	E
S-14 *	440/40	413 (500-3/4)	
CIRCLING	820-2 1/4 792 (800-2 1/4)	820-2 1/2 792 (800-2 1/2)	820-2 3/4 792 (800-2 3/4)
PASCAGOULA ALTIMETER MINIMUMS			
S-14 **	520/50	413 (500-1)	
CIRCLING	900-2 1/2 792 (800-2 1/2)	900-2 3/4 792 (800-2 3/4)	900-3 792 (800-3)

HIRL Rwy 14-32, 18-36

HI-TACAN Y RWY 14

SC-4, 09 SEP 2021 to 07 OCT 2021

SC-4, 09 SEP 2021 to 07 OCT 2021