

LOC I-GPT 110.9	APP CRS 137°	Rwy Idg TDZE Apt Elev	9002 27 28
---------------------------	------------------------	-----------------------------	---------------------------------------

ILS Z or LOC Z RWY 14

GULFPORT-BILOXI INTL (GPT)

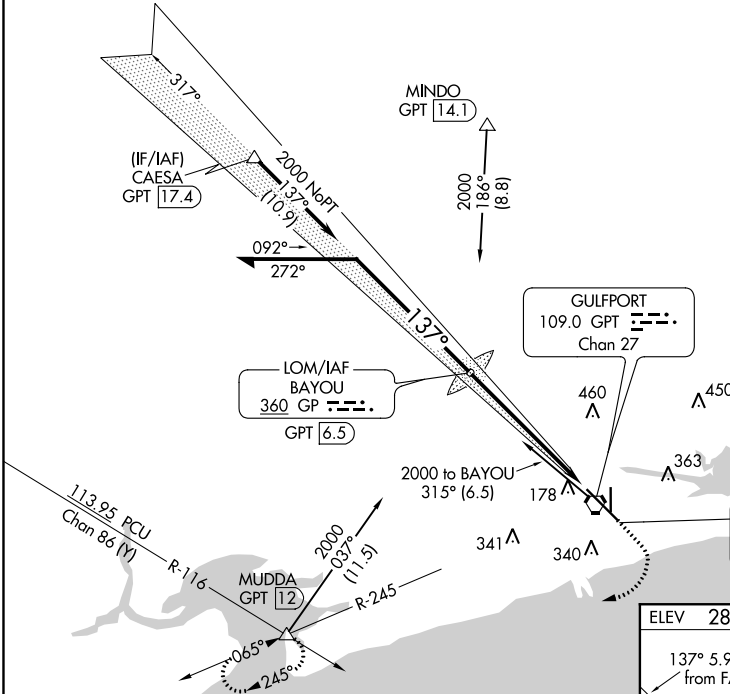
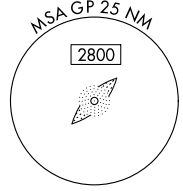
<p>▼ For inop ALS, increase S-ILS 14 Cat E visibility to RVR 4000 and S-LOC 14 Cat E visibility to 1½ SM. ▲ **RVR 1800 authorized with use of FD or AP or HUD to DA. ASR</p>	<p>MALSR </p>	<p>MISSED APPROACH: Climb to 500 then climbing right turn to 2000 on GPT VORTAC R-245 to MUDDA INT/12 DME and hold.</p>
--	-------------------	---

ATIS 119.45	GULFPORT APP CON * 127.5 254.25	GULFPORT TOWER * 123.7 (CTAF) 0 339.8	GND CON 120.4 348.6	UNICOM 122.95
-----------------------	---	---	-------------------------------	-------------------------

Procedure NA for arrivals at CAESA on V552 westbound.

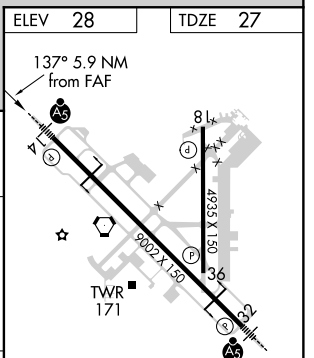
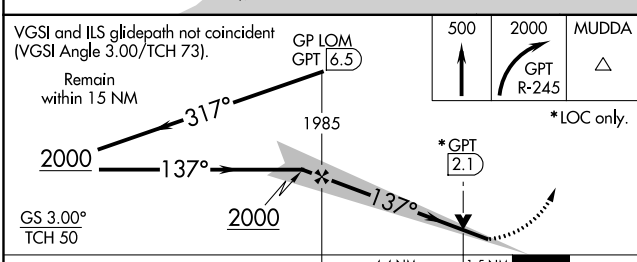
1549

ALTERNATE MISSED APCH FIX



SC-4, 09 SEP 2021 to 07 OCT 2021

SC-4, 09 SEP 2021 to 07 OCT 2021



CATEGORY	A	B	C	D	E
	227/24		200 (200-½)		
S-ILS 14**					
S-LOC 14	560/24	533 (600-½)	560/55		533 (600-1)
CIRCLING	560-1	640-1	820-2¼	820-2½	820-2¾
	532 (600-1)	612 (700-1)	792 (800-2¼)	792 (800-2½)	792 (800-2¾)

HIRL Rwy 14-32	0
MIRL Rwy 18-36	0
FAF to MAP 5.9 NM	
Knots	60 90 120 150 180
Min:Sec	5:54 3:56 2:57 2:22 1:58