

LOC I-UXI 108.3	APP CRS 317°	Rwy Idg 9002
		TDZE 28
		Apt Elev 29

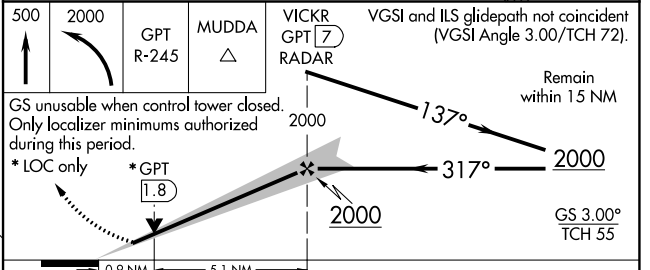
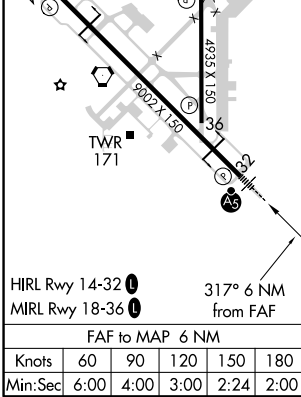
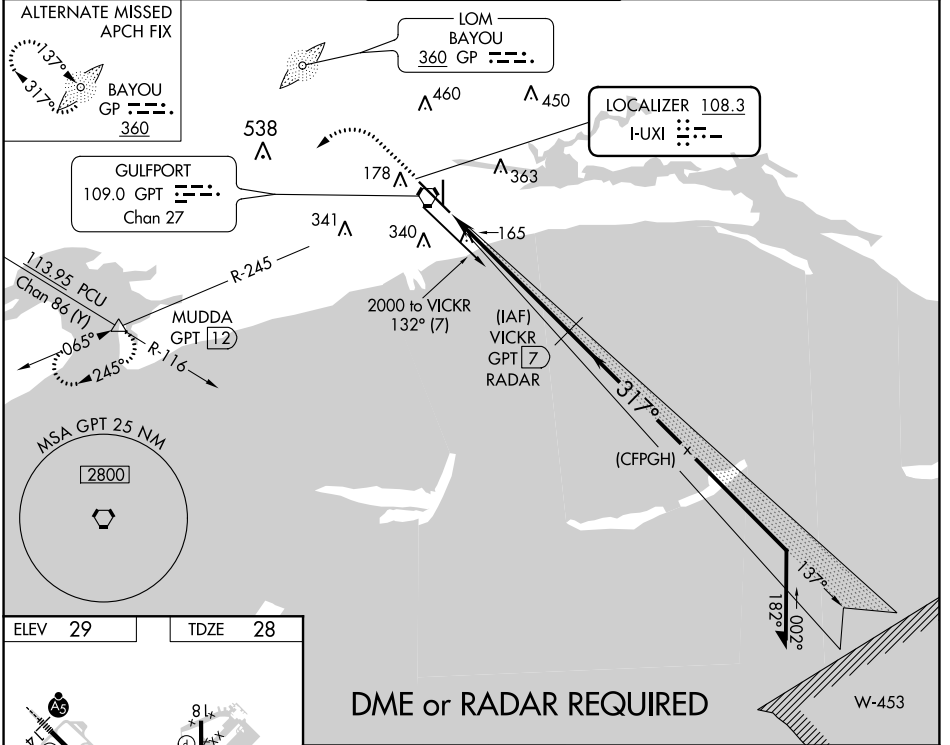
ILS Z or LOC Z RWY 32

GULFPORT-BILOXI INTL (GPT)

ASR DME from GPT VORTAC. Simultaneous reception of I-UXI and GPT DME required. DME or RADAR required, except DME required when control tower closed. For inop ALS, increase S-ILS 32 Cat E visibility to RVR 4000 and S-LOC 32 Cat C/D/E visibility to RVR 5500.
** RVR 1800 authorized with use of FD or AP or HUD to DA.

MALSR MISSIE APPROACH: Climb to 500 then climbing left turn to 2000 on GPT VORTAC R-245 to MUDDA INT/GPT 12 DME and hold.

ATIS 119.45	GULFPORT APP CON * 127.5 254.25	GULFPORT TOWER * 123.7 (CTAF) 0 339.8	GND CON 120.4 348.6	UNICOM 122.95
-----------------------	---	---	-------------------------------	-------------------------



CATEGORY	A	B	C	D	E
S-ILS 32 **	228/24 200 (200-½)				
S-LOC 32	380/24	352 (400-½)	380/30	352 (400-¾)	
C CIRCLING	500-1 471 (500-1)	640-1 611 (700-1)	820-2¼ 791 (800-2¼)	820-2½ 791 (800-2½)	820-2¾ 791 (800-2¾)

SC-4, 09 SEP 2021 to 07 OCT 2021

SC-4, 09 SEP 2021 to 07 OCT 2021