

WAAS CH 97301 W14A	APP CRS 137°	Rwy Idg 9002 TDZE 27 Apt Elev 28
--	------------------------	---

RNAV (GPS) RWY 14

GULFPORT-BILOXI INTL (GPT)

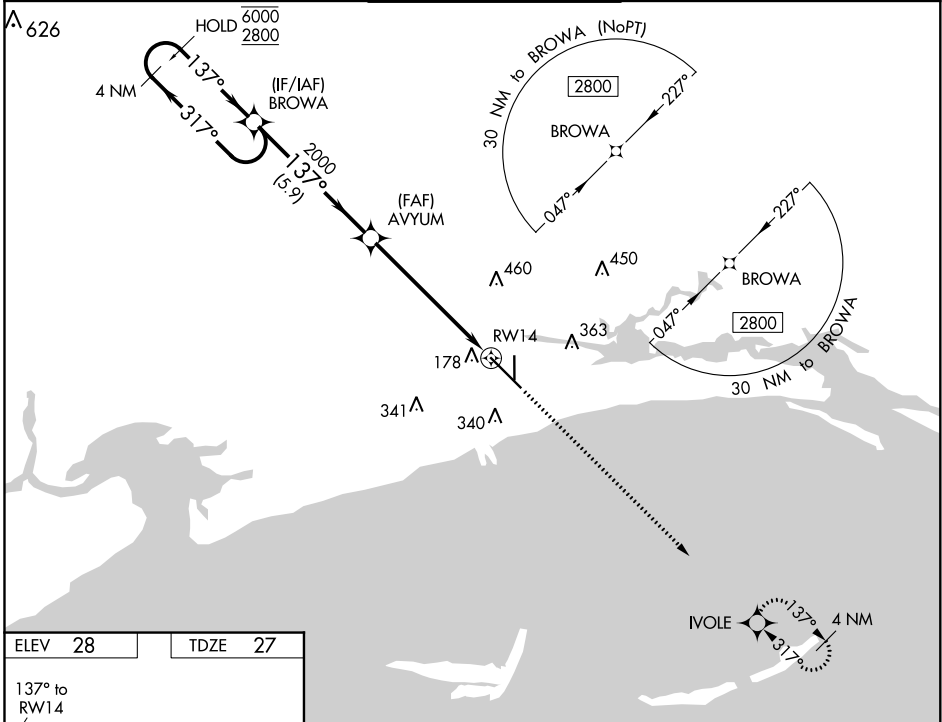
RNP APCH.

⚠ For uncompensated Baro-VNAV systems, LNAV/VNAV NA below -3°C or above 54°C. For inop ALS, increase LNAV/VNAV all Cats visibility to RVR 5500.
ASR **RVR 1800 authorized with use of FD or AP or HUD to DA.

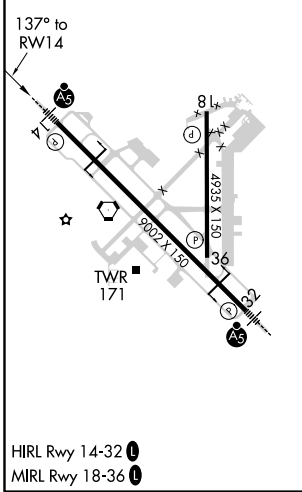


MISSED APPROACH: Climb to 2800 direct IVOLE and hold.

ATIS 119.45	GULFPORT APP CON * 127.5 254.25	GULFPORT TOWER * 123.7 (CTAF) 339.8	GND CON 120.4 348.6	UNICOM 122.95
-----------------------	---	---	-------------------------------	-------------------------



ELEV 28	TDZE 27
---------	---------



4 NM Holding Pattern		VGSi and RNAV glidepath not coincident (VGSi Angle 3.00/TCH 73).		2800	IVOLE
6000 ← 317°		2800 → 137°		*LNAV only.	
GP 3.00° TCH 50		2000		* 1.5 NM to RWY 14	
5.9 NM		4.6 NM		1.5 NM	
CATEGORY	A	B	C	D	
LPV DA**	227/24 200 (200-½)				
RNAV/VNAV DA	404/35 377 (400-⅝)				
RNAV MDA	580/24	553 (600-½)	580/60	553 (600-1¼)	
C CIRCLING	580-1 552 (600-1)	640-1 612 (700-1)	820-2¼ 792 (800-2¼)	820-2½ 792 (800-2½)	

SC-4, 09 SEP 2021 to 07 OCT 2021

SC-4, 09 SEP 2021 to 07 OCT 2021