

WAAS CH <b>69512</b> <b>W18A</b>	APP CRS <b>182°</b>	Rwy Idg <b>4935</b> TDZE <b>27</b> Apt Elev <b>29</b>
--	------------------------	---

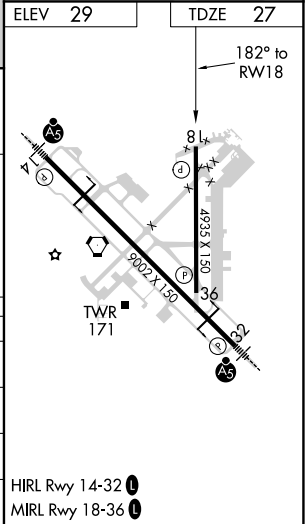
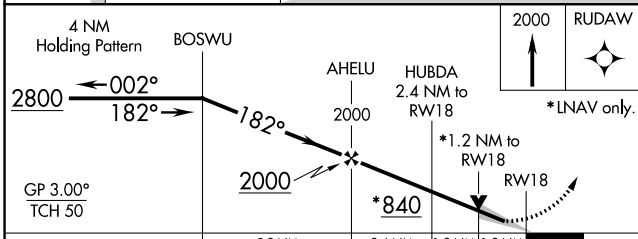
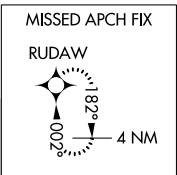
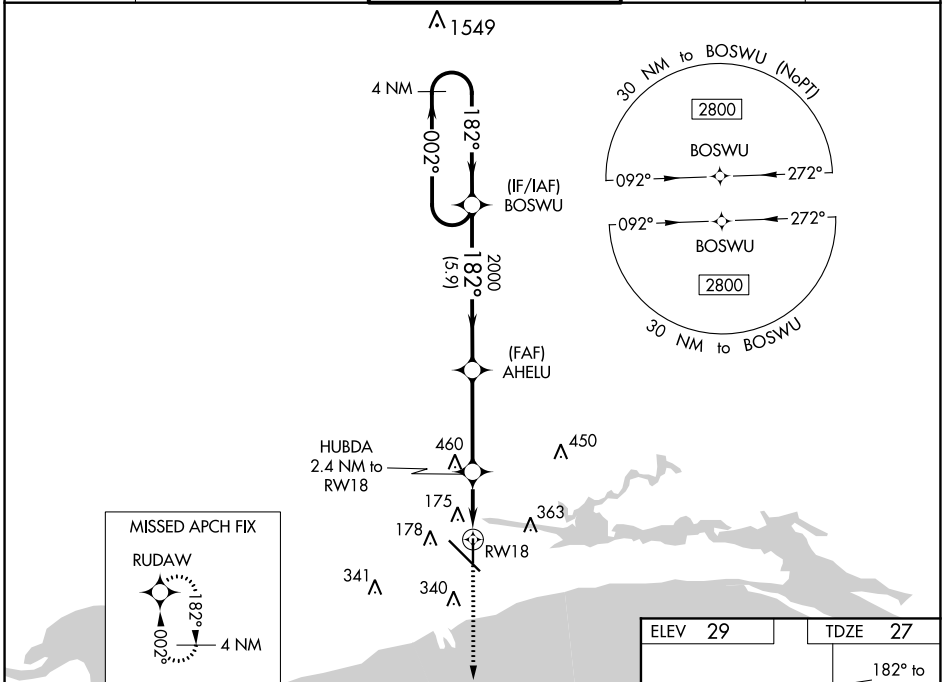
# RNAV (GPS) RWY 18

GULFPORT-BILOXI INTL (GPT)

**ASR** For uncompensated Baro-VNAV systems, LNAV/VNAV NA below -3°C (27°F) or above 54°C (130°F). DME/DME RNP-0.3 NA.

MISSED APPROACH: Climb to 2000 direct RUDAW and hold.

ATIS <b>119.45</b>	GULFPORT APP CON * <b>127.5 254.25</b>	GULFPORT TOWER * <b>123.7 (CTAF) 339.8</b>	GND CON <b>120.4 348.6</b>	UNICOM <b>122.95</b>
-----------------------	---	---	-------------------------------	-------------------------



CATEGORY	A	B	C	D
LPV DA		227- <sup>3</sup> / <sub>4</sub>	200 (200- <sup>3</sup> / <sub>4</sub> )	
LNAV/VNAV DA		433-1 <sup>1</sup> / <sub>8</sub>	406 (500-1 <sup>1</sup> / <sub>8</sub> )	
LNAV MDA	440-1	413 (500-1)	440-1 <sup>1</sup> / <sub>8</sub>	413 (500-1 <sup>1</sup> / <sub>8</sub> )
CIRCLING	500-1 471 (500-1)	640-1 611 (700-1)	820-2 <sup>1</sup> / <sub>4</sub> 791 (800-2 <sup>1</sup> / <sub>4</sub> )	820-2 <sup>1</sup> / <sub>2</sub> 791 (800-2 <sup>1</sup> / <sub>2</sub> )

SC-4, 09 SEP 2021 to 07 OCT 2021

SC-4, 09 SEP 2021 to 07 OCT 2021