

WAAS CH 56207 W32A	APP CRS 317°	Rwy Idg 9002 TDZE 28 Apt Elev 29
---------------------------------	------------------------	---

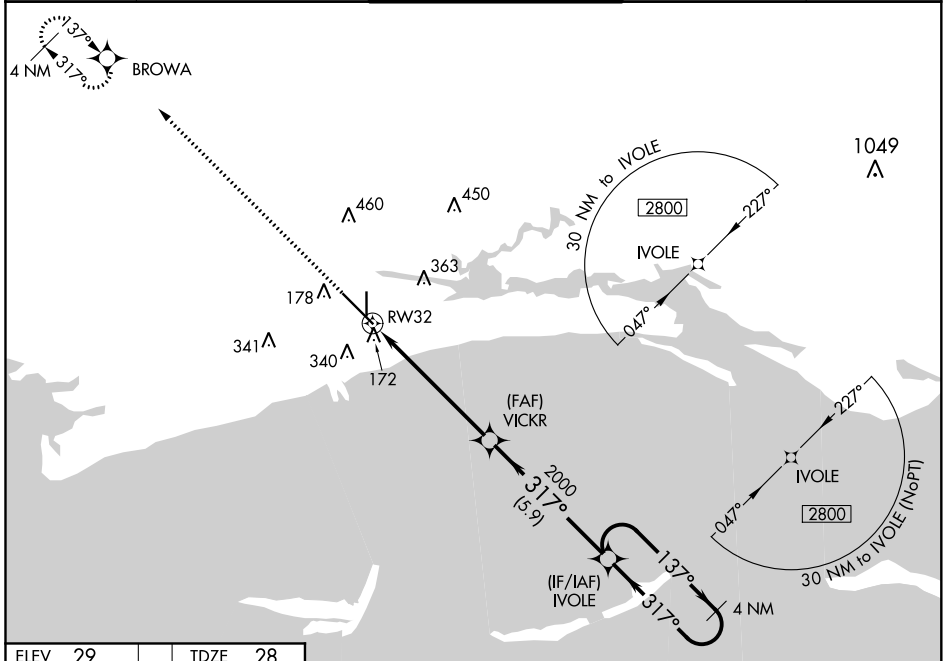
RNAV (GPS) RWY 32

GULFPORT-BILOXI INTL (GPT)

ASR For uncompensated Baro-VNAV systems, LNAV/VNAV NA below -3°C (27°F) or above 54°C (130°F). DME/DME RNP-0.3 NA. For inop ALS, increase LNAV/VNAV all Cats visibility to 1½ SM and LNAV Cat C/D to RVR 6000. # RVR 1800 authorized with use of FD or AP or HUD to DA.

MALS R MISSED APPROACH: Climb to 2000 direct BROWA and hold.

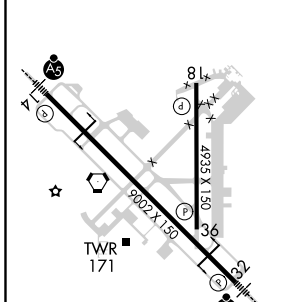
ATIS 119.45	GULFPORT APP CON * 127.5 254.25	GULFPORT TOWER * 123.7 (CTAF) 0 339.8	GND CON 120.4 348.6	UNICOM 122.95
-----------------------	---	---	-------------------------------	-------------------------



SC-4, 09 SEP 2021 to 07 OCT 2021

SC-4, 09 SEP 2021 to 07 OCT 2021

ELEV 29	TDZE 28
---------	---------



HIRL Rwy 14-32	MIRL Rwy 18-36
----------------	----------------

2000 ↑ BROWA * LNAV only.	VICKR 2000	YGSI and RNAV glidepath not coincident (VGSI Angle 3.00/TCH 72).		4 NM Holding Pattern
		IVOLE 2800		
* 1.1 NM to RWY 32		137° → ← 317°		GP 3.00° TCH 55
RWY 32		2000		
1.1 NM		4.9 NM		5.9 NM
CATEGORY	A	B	C	D
LPV DA #		228/24	200 (200-½)	
LNAV/VNAV DA		446/50	418 (500-1)	
LNAV MDA		440/24	412 (500-½)	
C CIRCLING	500-1	640-1	820-2¼	820-2½
	471 (500-1)	611 (700-1)	791 (800-2¼)	791 (800-2½)