

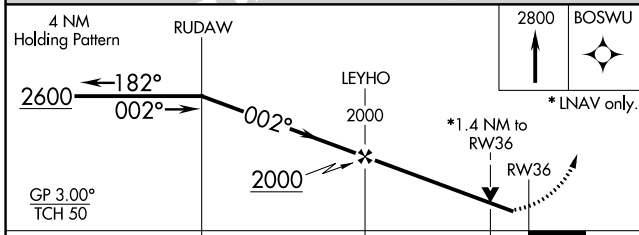
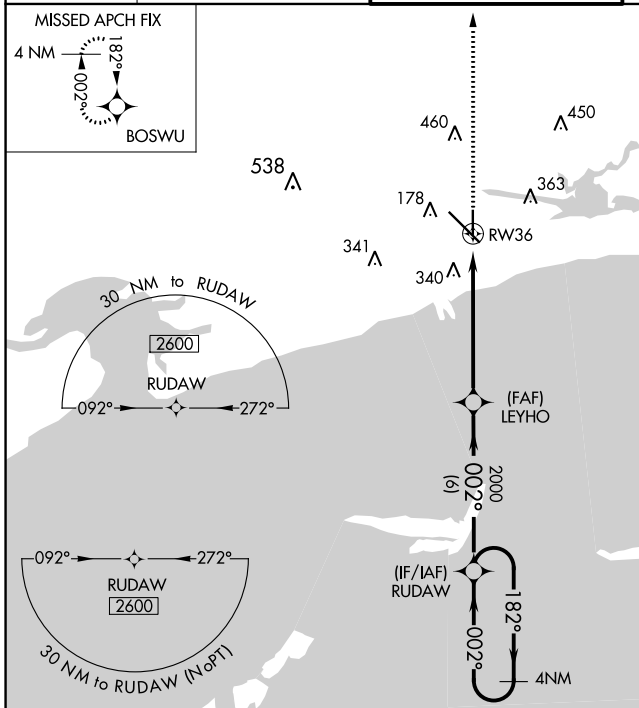
WAAS CH 42812 W36A	APP CRS 002°	Rwy Idg TDZE Apt Elev	4935 27 29
--	------------------------	-----------------------------	---------------------------------------

RNAV (GPS) RWY 36

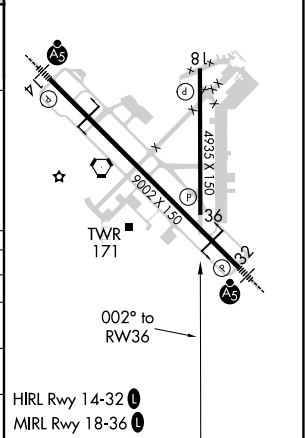
GULFPORT-BILOXI INTL (GPT)

<p>For uncompensated Baro-VNAV systems, LNAV/VNAV NA below -3°C (27°F) or above 54°C (130°F). Rwy 36 helicopter visibility reduction below 3/4 SM NA. DME/DME RNP-0.3 NA.</p>	<p>MISSED APPROACH: Climb to 2800 direct BOSWU and hold.</p>		
	<p>ATIS 119.45</p>	<p>GULFPORT APP CON * 127.5 254.25</p>	<p>GULFPORT TOWER * 123.7 (CTAF) 0 339.8</p>

ATIS 119.45	GULFPORT APP CON * 127.5 254.25	GULFPORT TOWER * 123.7 (CTAF) 0 339.8	GND CON 120.4 348.6	UNICOM 122.95
-----------------------	---	---	-------------------------------	-------------------------



CATEGORY	A	B	C	D
LPV DA		277-3/4	250 (300-3/4)	
LNAV/VNAV DA		334-7/8	307 (400-7/8)	
LNAV MDA	520-1	493 (500-1)	520-1 3/8	493 (500-1 3/8)
CIRCLING	520-1 491 (500-1)	640-1 611 (700-1)	820-2 1/4 791 (800-2 1/4)	820-2 1/2 791 (800-2 1/2)



SC-4, 09 SEP 2021 to 07 OCT 2021

SC-4, 09 SEP 2021 to 07 OCT 2021