

FORT RUCKER, ALABAMA

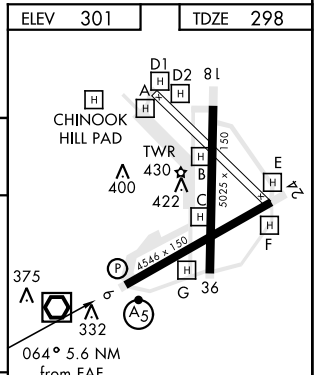
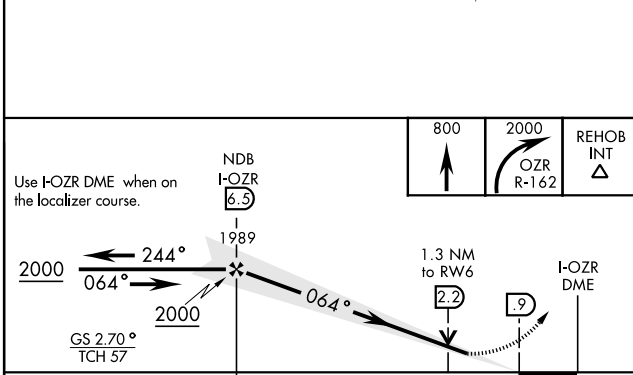
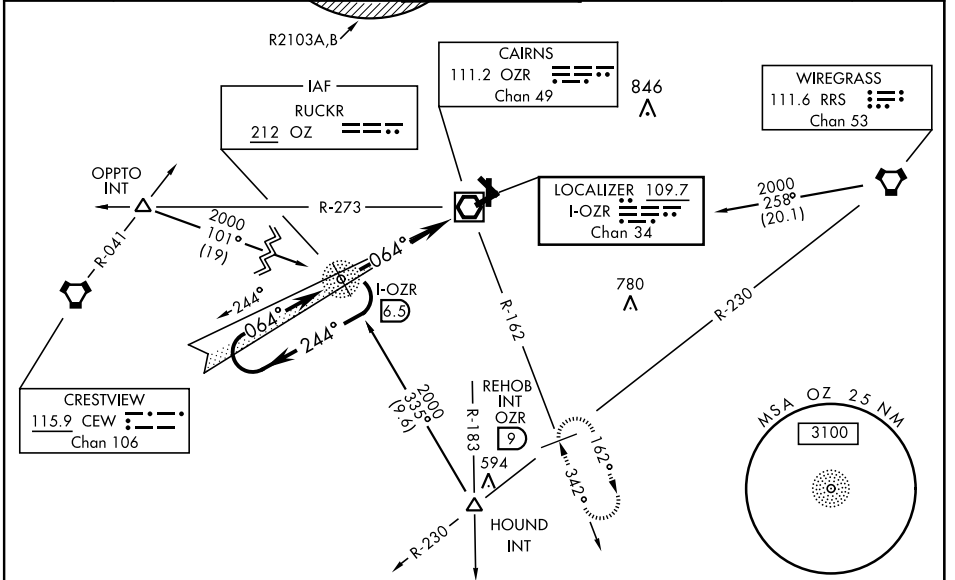
# ILS or LOC RWY 6

LOC I-OZR <b>109.7</b> Chan <b>34</b>	APCH CRS <b>064°</b>	Rwy Idg TDZE Arpt Elev <b>4546</b> <b>298</b> <b>301</b>
---	-------------------------	---

AL-577 [USA]

CAIRNS AAF (KOZR)

ADF or DME required.		MALS R (A5)	MISSED APPROACH: Climb to 800 then climbing right turn to 2000 via OZR VOR/DME R-162 to REHOB INT (OZR 9 DME) and hold; or when directed by ATIS, climb to 800 then climbing left turn to 2000 heading 290° within 10 NM (RADAR required).		
ATIS <b>111.2</b> <b>316.15</b>	CAIRNS APP CON <b>125.4</b> <b>327.125</b> 021°-120° <b>133.75</b> <b>270.35</b> 121°-219° <b>133.45</b> <b>239.275</b> 220°-340° <b>121.1</b> <b>319.25</b> 341°-020°	CAIRNS TOWER * <b>135.2</b> (CTAF) <b>248.55</b>	GND CON <b>121.9</b> <b>288.25</b>	CLNC DEL <b>118.075</b> <b>380.1</b>	PAR



CATEGORY	A	B	C	D
S-ILS 6		498/24	200 (200-½)	
S-LOC 6 *	760/24	462 (500-½)	760/40 462 (500-¾)	760/50 462 (500-1)
CIRCLING	780-1 479 (500-1)	820-1 519 (600-1)	860-1½ 559 (600-1½)	900-2 599 (600-2)

ELEV	301	TDZE	298
HIRL Rwy 6-24 MIRL Rwy 18-36			
FAF to MAP 5.6 NM			
Knots	60	90	120 150 180
Min:Sec	5:36	3:44	2:48 2:14 1:52

FORT RUCKER, ALABAMA  
Amdt B 05NOV20

31°16'N-85°43'W

CAIRNS AAF (KOZR)

# ILS or LOC RWY 6

SE-4, 09 SEP 2021 to 07 OCT 2021

SE-4, 09 SEP 2021 to 07 OCT 2021