

NDB RWY 6

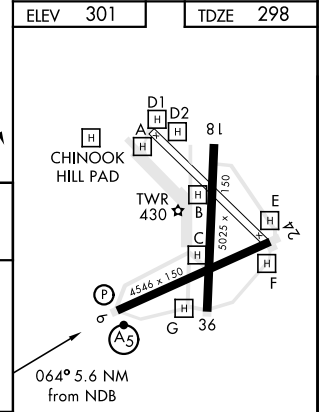
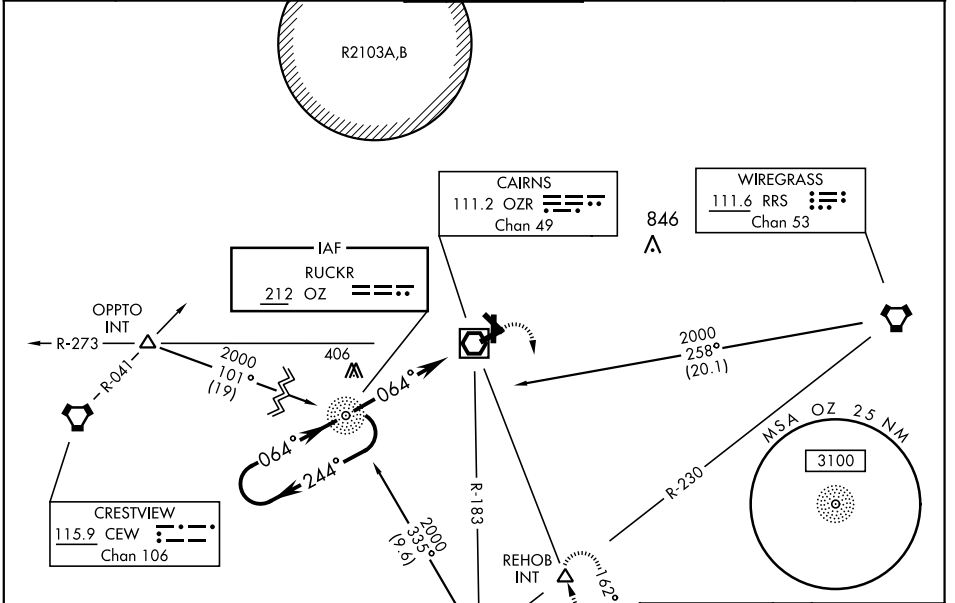
NDB OZ 212	APCH CRS 064°	Rwy ldg TDZE Arprt Elev 4546 298 301	AL-577 [USA]	CAIRNS AAF (KOZR)
----------------------	-------------------------	--------------------------------------------------------------------------	--------------	-------------------

▼* When ALS inop, increase CAT AB RVR to 50, vis to 1 mile; CAT CD RVR to 60, vis to 1¼ miles.
 Visibility reduction by helicopters NA.



MISSED APPROACH: Climbing right turn to 2000 via OZR VOR/DME R-162 to REHOB INT and hold; or when directed by ATC, climbing left turn to 2000 heading 290° within 10 NM (RADAR required).

CAIRNS APP CON	CAIRNS TOWER ★	GND CON	CLNC DEL	PAR
ATIS 111.2 316.15	125.4 327.125 021°-120° 133.75 270.35 121°-219° 133.45 239.275 220°-340° 121.1 319.25 341°-020°	135.2 (CTAF) 248.55	121.9 288.25	118.075 380.1



ELEV	301	TDZE	298		
CATEGORY	A	B	C	D	
S-6 *	720/40	422	(500-¾)		
CIRCLING	780-1 479 (500-1)	820-1 519 (600-1)	860-1½ 559 (600-1½)	900-2 599 (600-2)	
FAF to MAP 5.6 NM					
Knots	60	90	120	150	180
Min:Sec	5:36	3:44	2:48	2:14	1:52

FORT RUCKER, ALABAMA 31° 16' N-85° 43' W CAIRNS AAF (KOZR)

NDB RWY 6

SE-4, 09 SEP 2021 to 07 OCT 2021

SE-4, 09 SEP 2021 to 07 OCT 2021