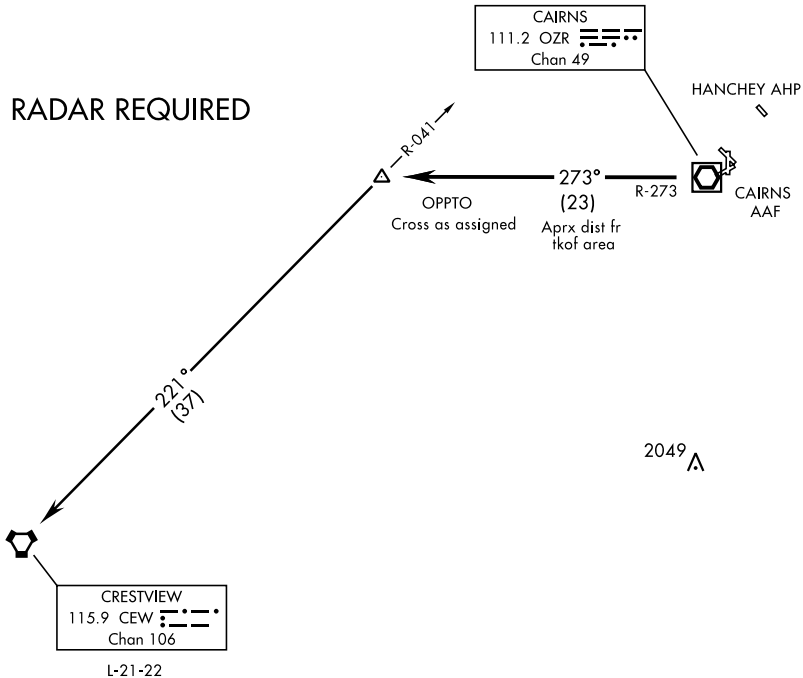


OPPTO-TWO DEPARTURE (OPPTO2•OPPTO)

ATIS 111.2 316.15
CLNC DEL
118.075 380.1
GND CON
121.9 288.25
CAIRNS TOWER *
135.2 (CTAF) 248.55
DEP CON
133.45 239.275
JACKSONVILLE CENTER
120.2 346.4

SL-577 [USA]

RADAR REQUIRED



SE-4, 09 SEP 2021 to 07 OCT 2021

SE-4, 09 SEP 2021 to 07 OCT 2021

DEPARTURE ROUTE DESCRIPTION

- TAKE-OFF RWY 6: Climbing left turn heading 270°
 - TAKE-OFF RWY 18: Climbing right turn heading 205°
 - TAKE-OFF RWY 24: Climbing right turn heading 300°
 - TAKE-OFF RWY 36: Climbing left turn heading 270°
 - TAKE-OFF PAD A: Climb heading 310°
 - TAKE-OFF PAD D2: Climb heading 360°
- Maintain 2000, expect clearance to requested altitude/flight level ten (10) minutes after departure.
- Expect Radar vector to intercept OZR VOR/DME R-273 to OPPTO INT. Thence via Transition.
- CRESTVIEW TRANSITION: (OPPTO2 • CEW) Turn left via CEW R-041 to CEW VORTAC.

OPPTO-TWO DEPARTURE (OPPTO2•OPPTO)