

RNAV (GPS) RWY 36

WAAS CH 63110 W36A	APCH CRS 004°	Rwy Idg TDZE Arprt Elev 5025 298 301
--	-------------------------	--

AL-577 [USA]

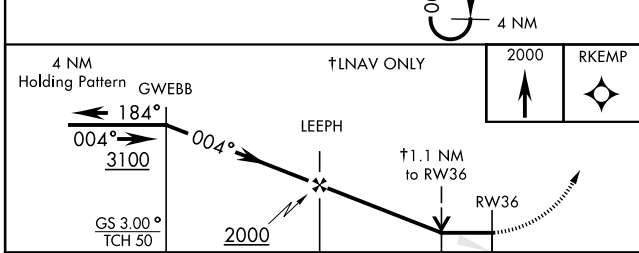
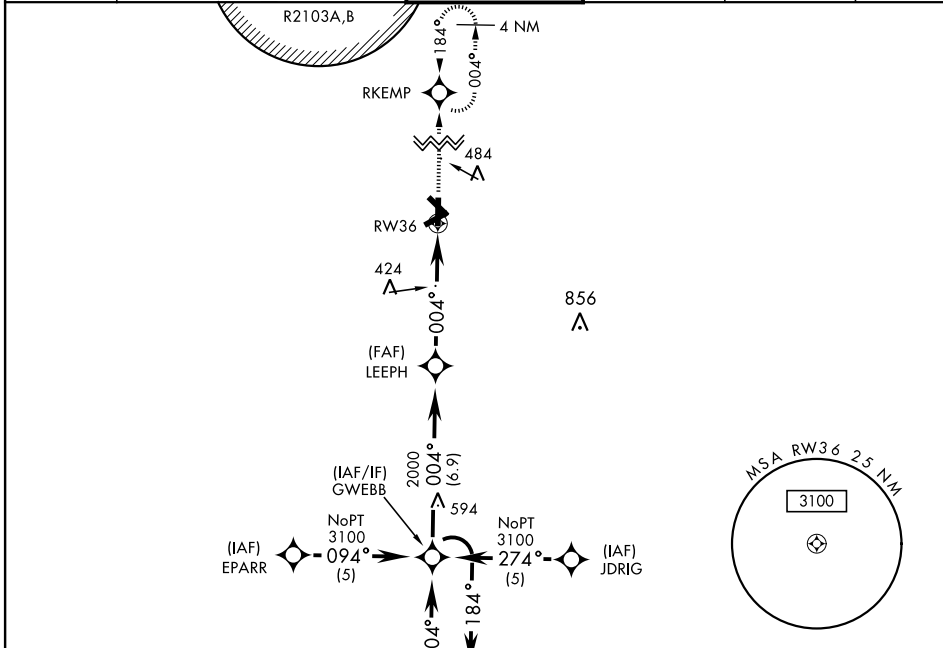
CAIRNS AAF (KOZR)

RADAR required.

MISSED APPROACH: Climb to 2000 direct RKEMP and hold.

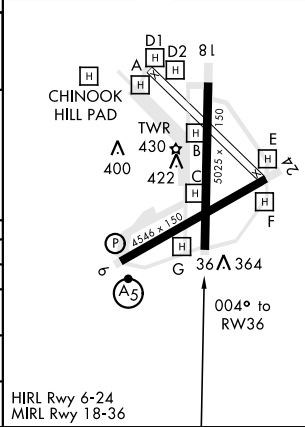
▼ DME/DME RNP-0.3 NA
For uncompensated BARO-VNAV systems, LNAV/VNAV NA
below -15°C (5°F) or above 48°C (118°F).

ATIS 111.2 316.15	CAIRNS APP CON			CAIRNS TOWER ★ 135.2 (CTAF) 248.55	GND CON 121.9 288.25	CLNC DEL 118.075 380.1	PAR
	021°-120°	125.4	327.125				
	121°-219°	133.75	270.35				
	220°-340°	133.45	239.275				
	341°-020°	121.1	319.25				



ELEV 301	TDZE 298
----------	----------

CATEGORY	A	B	C	D
LPV DA		565-1	267	(300-1)
LNAV/VNAV DA		634-1¼	336	(400-1¼)
LNAV MDA	680-1	382	(400-1)	680-1¼ 382 (400-1¼)
CIRCLING	780-1 479 (500-1)	820-1 519 (600-1)	860-1½ 559 (600-1½)	900-2 599 (600-2)



RNAV (GPS) RWY 36

SE-4, 09 SEP 2021 to 07 OCT 2021

SE-4, 09 SEP 2021 to 07 OCT 2021