

FORT RUCKER, ALABAMA

RNAV (GPS) RWY 6

WAAS CH 50537 W06A	APCH CRS 064°	Rwy Ildg TDZE Arprt Elev	4546 298 301
--	-------------------------	--------------------------------	---

AL-577 [USA]

CAIRNS AAF (KOZR)

DME/DME RNP-0.3 NA

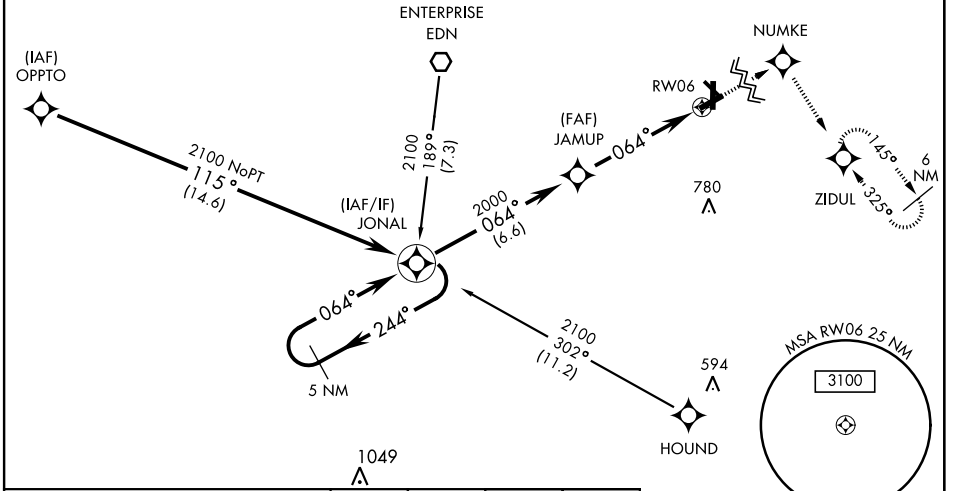
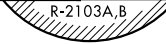
▼ * When ALS inop, increase LNAV/VNAV visibility to RVR 40, increase LNAV CAT AB visibility to RVR 55 and CAT CD vis to 1 3/8 miles.

MALSRL
A5

MISSED APPROACH: Climb to 2000 direct NUMKE then climbing right turn on track 148° to ZIDUL and hold.

CAIRNS APP CON	CAIRNS TOWER ★	GND CON	CLNC DEL	PAR
ATIS 111.2 316.15	021°-120° 125.4 327.125 121°-219° 133.75 270.35 220°-340° 133.45 239.275 341°-020° 121.1 319.25	★ 135.2 (CTAF) 248.55	121.9 288.25	118.075 380.1

For uncompensated BARO-VNAV systems, LNAV/VNAV NA below -5°C (23°F) or above 54°C (130°F).

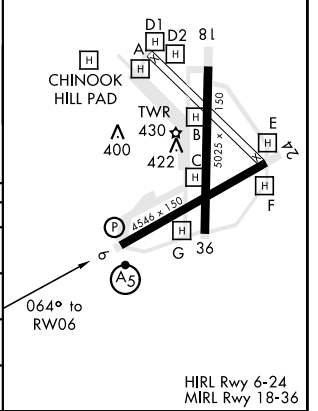
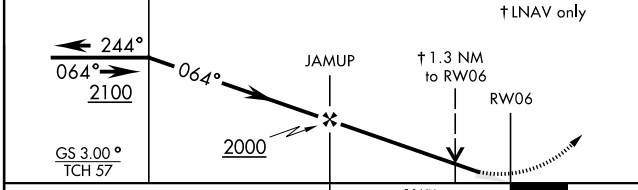


SE-4, 09 SEP 2021 to 07 OCT 2021

SE-4, 09 SEP 2021 to 07 OCT 2021



ELEV 301	TDZE 298
----------	----------



CATEGORY	A	B	C	D
LPV DA	498/24		200	(200-1/2)
LNAV/VNAV DA*	560/24		262	(300-1/2)
LNAV MDA*	760/24 462 (500-1/2)		760/50 462 (500-1)	
CIRCLING	780-1	820-1	860-1 1/2	900-2
	479 (500-1)	519 (600-1)	559 (600-1 1/2)	599 (600-2)

FORT RUCKER, ALABAMA
Amdt 1A 05NOV20

31° 16'N-85° 43'W

CAIRNS AAF (KOZR)

RNAV (GPS) RWY 6

HIRL Rwy 6-24
MIRL Rwy 18-36