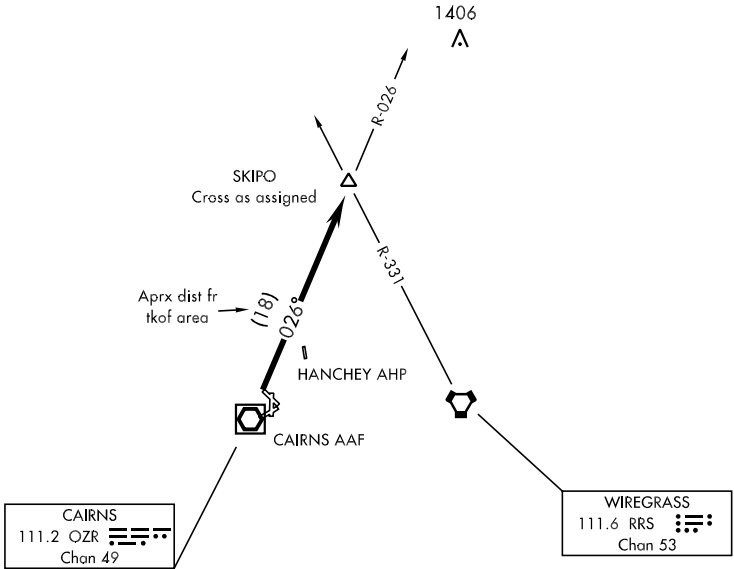


# SKIPO-TWO DEPARTURE (SKIPO2•SKIPO)

ATIS 111.2 316.15  
 CLNC DEL  
 118.075 380.1  
 GND CON  
 121.9 288.25  
 CAIRNS TOWER ★  
 135.2 (CTAF) 248.55  
 DEP CON  
 125.4 327.125  
 JACKSONVILLE CENTER  
 120.2 346.4

SL-577 [USA]

## RADAR REQUIRED



SE-4, 09 SEP 2021 to 07 OCT 2021

SE-4, 09 SEP 2021 to 07 OCT 2021

## DEPARTURE ROUTE DESCRIPTION

TAKE-OFF RWY 6 or RWY 18: Climbing left turn heading 360° ....

TAKE-OFF RWY 24: Climbing right turn heading 050° ....

TAKE-OFF RWY 36: Climb heading 360° ....

TAKE-OFF PAD D1: Climb heading 015° ....

TAKE-OFF PAD D2: Climb heading 360° ....

Maintain 2000, expect clearance to requested altitude/flight level ten (10) minutes after departure.

.... Intercept OZR VOR/DME R-026 to SKIPO INT.