

VOR RWY 24

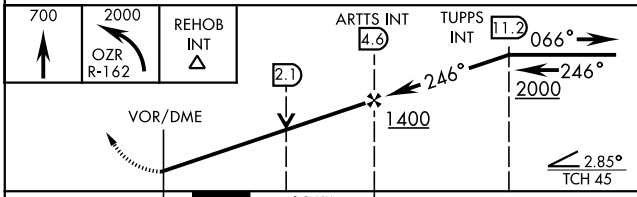
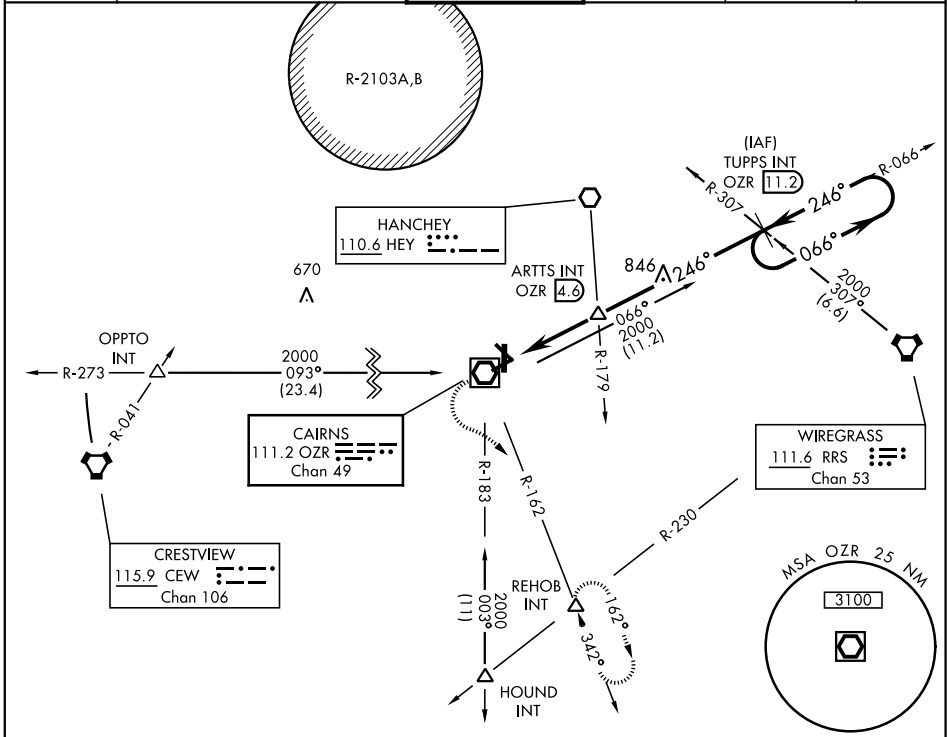
VOR/DME OZR 111.2 Chan 49	APCH CRS 246°	Rwy ldg TDZE Arprt Elev	4546 298 301
---	-------------------------	-------------------------------	---

AL-577 [USA]

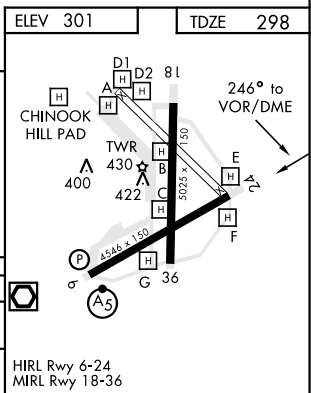
CAIRNS AAF (KOZR)

MISSED APPROACH: Climb to 700 then climbing left turn to 2000 via OZR
 VOR/DME R-162 to REHOB INT and hold; or when directed by ATC, climb to
 700 then climbing right turn heading 290° to 2000 within 10 NM (RADAR required).

ATIS 111.2 316.15	CAIRNS APP CON 125.4 327.125 021°-120° 133.75 270.35 121°-219° 133.45 239.275 220°-340° 121.1 319.25 341°-020°			CAIRNS TOWER ★ 135.2 (CTAF) 248.55	GND CON 121.9 288.25	CLNC DEL 118.075 380.1	PAR
---------------------------------------	--	--	--	--	--	--	-----



CATEGORY	A	B	C	D
S-24	680-1	382	(400-1)	680-1¼ 382 (400-1¼)
CIRCLING	780-1 479 (500-1)	820-1 519 (600-1)	860-1½ 559 (600-½)	900-2 599 (600-2)



VOR RWY 24

SE-4, 09 SEP 2021 to 07 OCT 2021

SE-4, 09 SEP 2021 to 07 OCT 2021