

FORT RUCKER, ALABAMA

VOR RWY 6

VOR/DME OZR 111.2 Chan 49	APCH CRS 056°	Rwy Idg TDZE Arprt Elev 4546 298 301
---	-------------------------	--

AL-577 [USA]

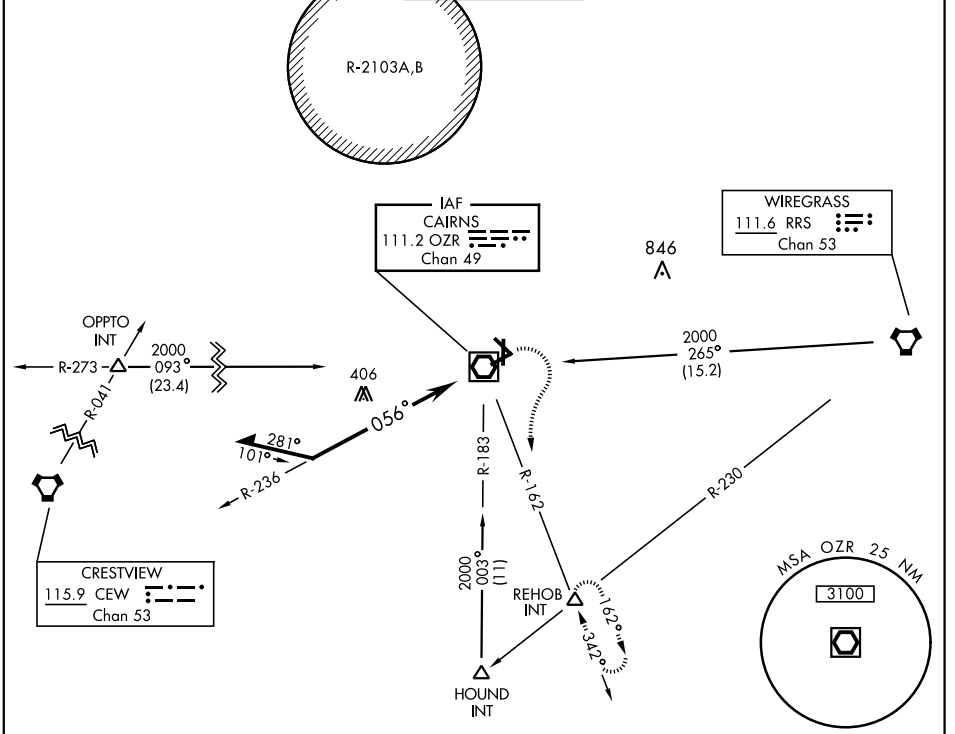
CAIRNS AAF (KOZR)

Visibility reduction by helicopters NA.
 * When ALS inop, increase CAT AB RVR to 50, vis to 1 mile; CAT CD RVR to 60, vis to 1 1/4 miles.

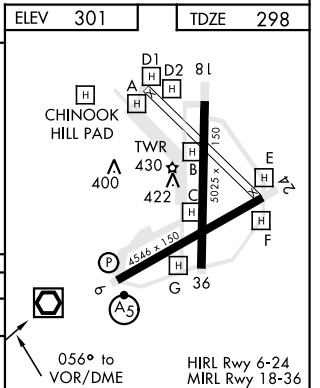


MISSED APPROACH: Climbing right turn to 2000 via OZR VOR/DME R-162 to REHOB INT and hold, or when directed by ATC, climbing left turn to 2000 heading 290° within 10 NM (RADAR required).

CAIRNS APP CON			CAIRNS TOWER * 135.2 (CTAF) 248.55	GND CON 121.9 288.25	CLNC DEL 118.075 380.1	PAR	
ATIS	125.4	327.125					021°-120°
111.2	133.75	270.35					121°-219°
316.15	133.45	239.275					220°-340°
	121.1	319.25	341°-020°				



2000 OZR R-162	REHOB INT	Remain within 10 NM		
CATEGORY	A	B	C	D
S-6 *	740/40 442 (500-3/4)			
CIRCLING	780-1 479 (500-1)	820-1 519 (600-1)	860-1 1/2 559 (600-1 1/2)	900-2 599 (600-2)



FORT RUCKER, ALABAMA
Amdt 15C 05NOV20

31° 16' N-85° 43' W

CAIRNS AAF (KOZR)

VOR RWY 6

SE-4, 09 SEP 2021 to 07 OCT 2021

SE-4, 09 SEP 2021 to 07 OCT 2021