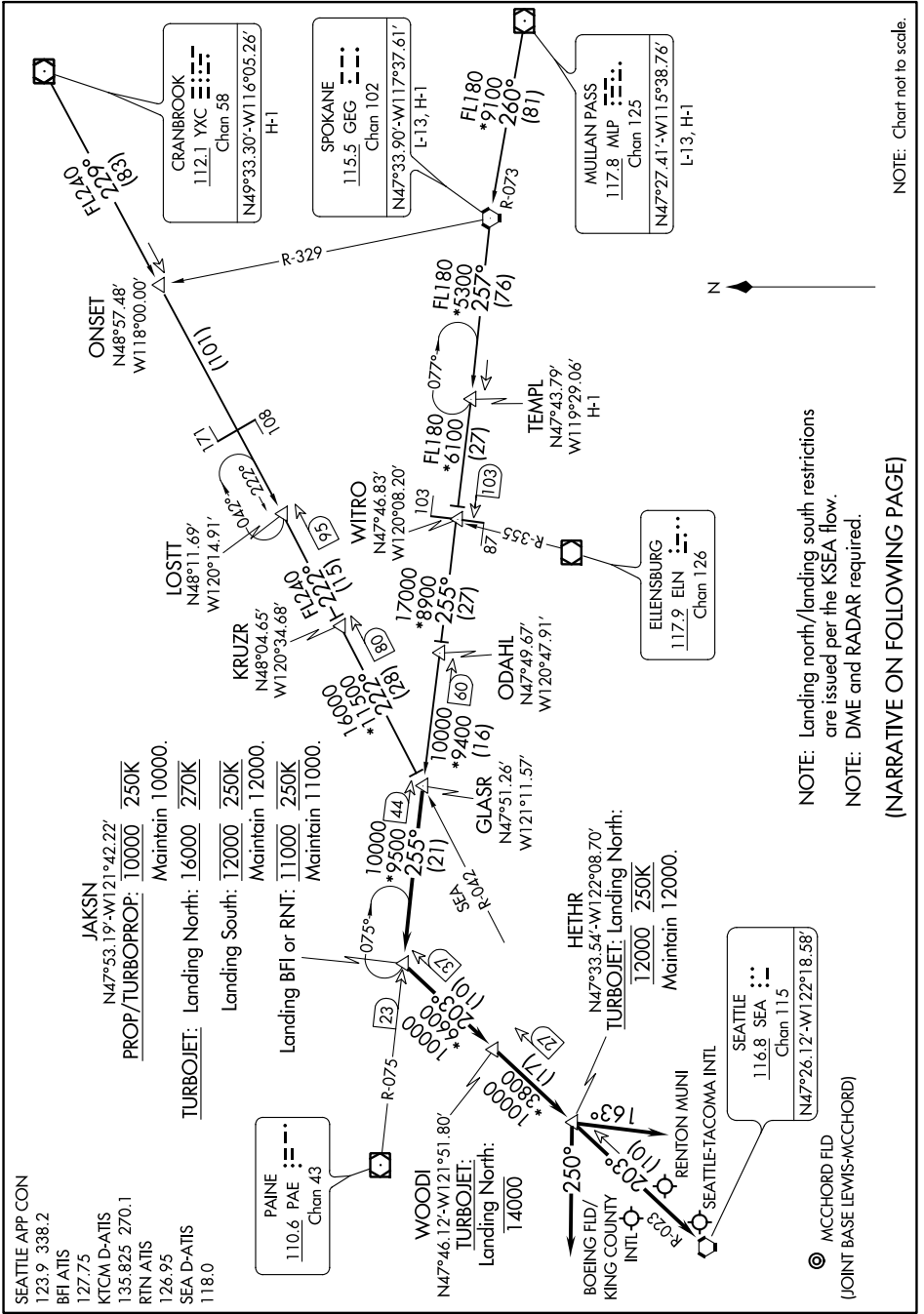


GLASR ONE ARRIVAL

NW-1, 09 SEP 2021 to 07 OCT 2021



NOTE: Chart not to scale.

NOTE: Landing north/landing south restrictions are issued per the KSEA flow.
NOTE: DME and RADAR required.

(NARRATIVE ON FOLLOWING PAGE)

NW-1, 09 SEP 2021 to 07 OCT 2021

GLASR ONE ARRIVAL