

MILTON, FLORIDA

ILS Y or LOC/DME RWY 14

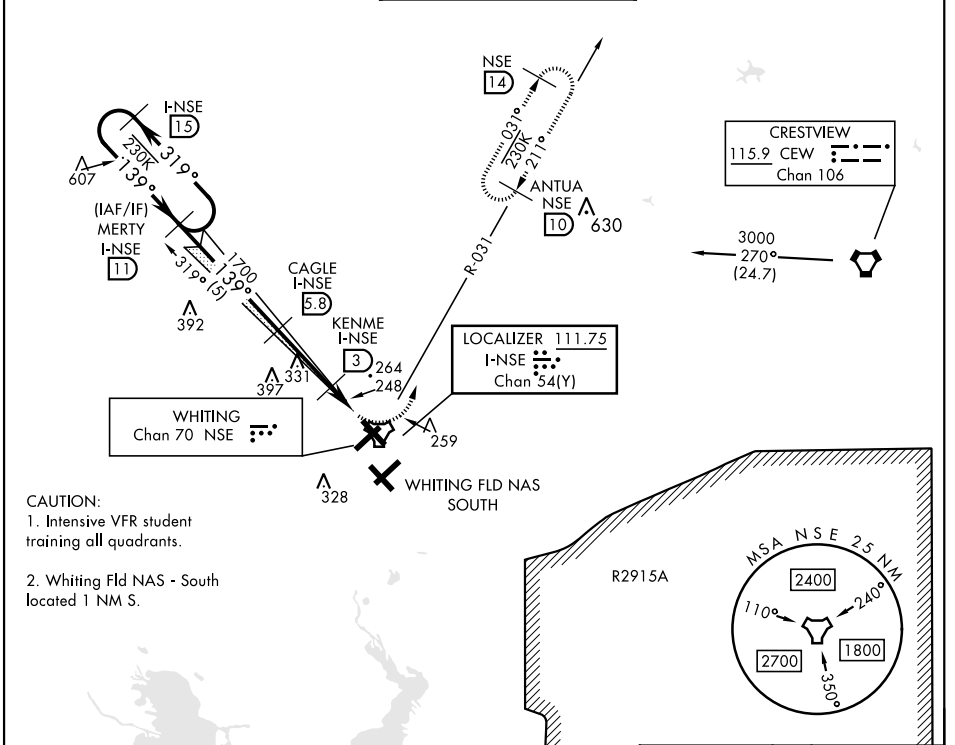
| | | |
|---|-------------------------|--|
| LOC/DME I-NSE 111.75 Chan 54(Y) | APCH CRS 139° | Rwy Idg TDZE Arprt Elev 6001 199 199 |
|---|-------------------------|--|

AL-602 [USN]

WHITING FLD NAS - NORTH (KNSE)

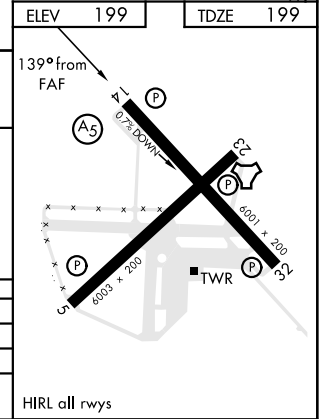
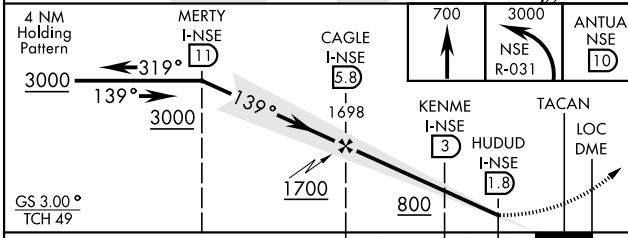
| | | |
|---|----------------|---|
| TACAN required. ▼ * When ALS inop, increase vis to 3/4 mile. ** When ALS inop, increase vis to 1 mile. *** Circling not authorized in sector SE of Rwy 5-23 and SW of Rwy 14-32. | MALS R (A5) | MISSED APPROACH: Climb to 700. Then climbing left turn to 3000. Intercept NSE TACAN R-031 to ANTUA and hold. Continue climb in hold. Contact Pensacola APP CON. |
|---|----------------|---|

| | | | | | |
|--------------------------|--|---|--------------------------|----------------------------|-----|
| ATIS * 290.325 | PENSACOLA APP CON 127.35 278.8 | NORTH WHITING TOWER * 121.4 306.925 | GND CON 251.15 | CLNC DEL 257.775 | ASR |
|--------------------------|--|---|--------------------------|----------------------------|-----|



- CAUTION:**
- Intensive VFR student training all quadrants.
 - Whiting Fld NAS - South located 1 NM S.

EMERG SAFE ALT 100 NM 3500



| CATEGORY | A | B | C | D |
|--------------|----------------------|----------------------|------------------------------|----------------------|
| S-ILS 14 * | 399-1/2 | 200 | (200-1/2) | |
| S-LOC 14 ** | 500-1/2 | 301 | (400-1/2) | |
| *** CIRCLING | 560-1 361 (400-1) | 660-1 461 (500-1) | 660-1 1/2 461 (500-1 1/2) | 760-2 561 (600-2) |

HIRL all rwys

MILTON, FLORIDA
Amdt 4 12AUG21

30° 43' N-87° 01' W

WHITING FLD NAS - NORTH (KNSE)

ILS Y or LOC/DME RWY 14

SE-3, 09 SEP 2021 to 07 OCT 2021

SE-3, 09 SEP 2021 to 07 OCT 2021