

MILTON, FLORIDA


ILS Z or RNAV (GPS) RWY 14

LOC I-NSE 111.75	APCH CRS 139°	Rwy Idg TDZE Arprt Elev 6001 199 199
----------------------------	-------------------------	--

AL-602 [USN]

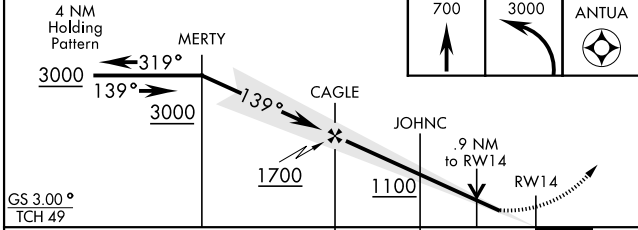
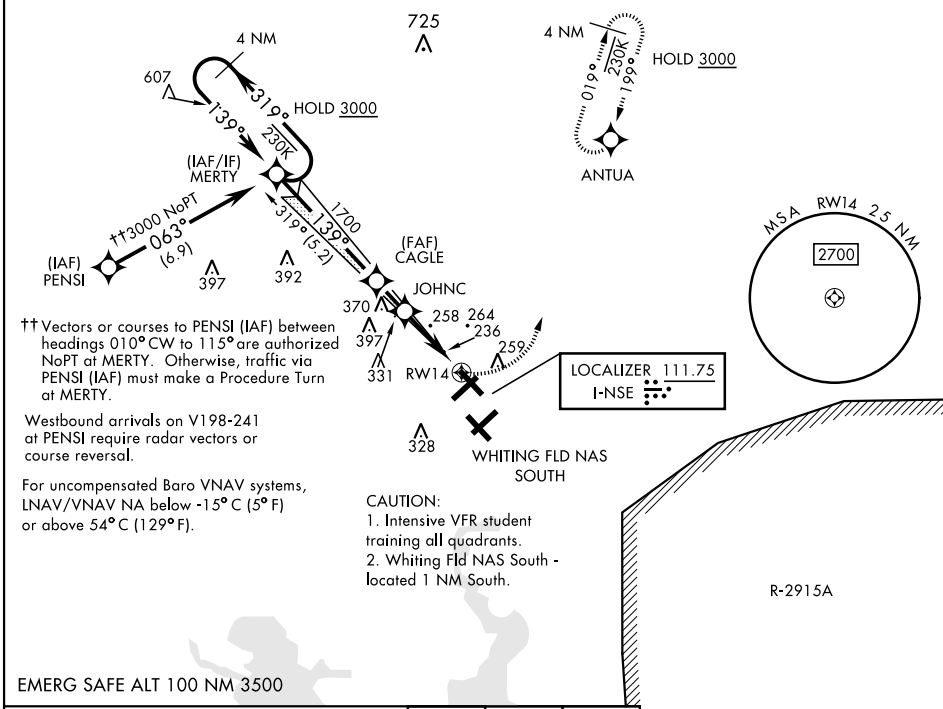
WHITING FLD NAS - NORTH (KNSE)

RNAV1 - GPS for ILS.
RNP APCH for LNAV/VNAV, LNAV.
 ▼ * When ALS inop, increase vis to ¾ mile.
 ** When ALS inop, increase vis to 1 mile.
 *** Circling not authorized in sector SE of Rwy 5-23 and SW of Rwy 14-32.

MALSRS


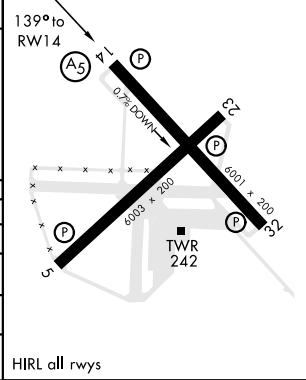
MISSED APPROACH: Climb to 700, then climbing left turn to 3000 direct to ANTUA and hold. Continue climb in hold. Contact Pensacola APP CON.

ATIS ★ 290.325	PENSACOLA APP CON 127.35 278.8	NORTH WHITING TOWER ★ 121.4 306.925	GND CON 251.15	CLNC DEL 257.775	ASR
--------------------------	--	---	--------------------------	----------------------------	-----



ELEV 199	TDZE 199
----------	----------

CATEGORY	A	B	C	D
S-ILS 14 *	399-½	200	(200-½)	
LNAV/VNAV DA *	449-½	250	(300-½)	
LNAV MDA **	520-½	321	(400-½)	
CIRCLING ***	560-1 361 (400-1)	660-1 461 (500-1)	660-1½ 461 (500-1½)	760-2 561 (600-2)



MILTON, FLORIDA
 Amdt 4 12AUG21

30°43'N-87°01'W

WHITING FLD NAS - NORTH (KNSE)

ILS Z or RNAV (GPS) RWY 14

SE-3, 09 SEP 2021 to 07 OCT 2021

SE-3, 09 SEP 2021 to 07 OCT 2021