

MILTON, FLORIDA

20254

RNAV (GPS) RWY 23

APCH CRS	Rwy Idg	6003
229°	TDZE	183
	Arprt Elev	199

AL-602 [USN]

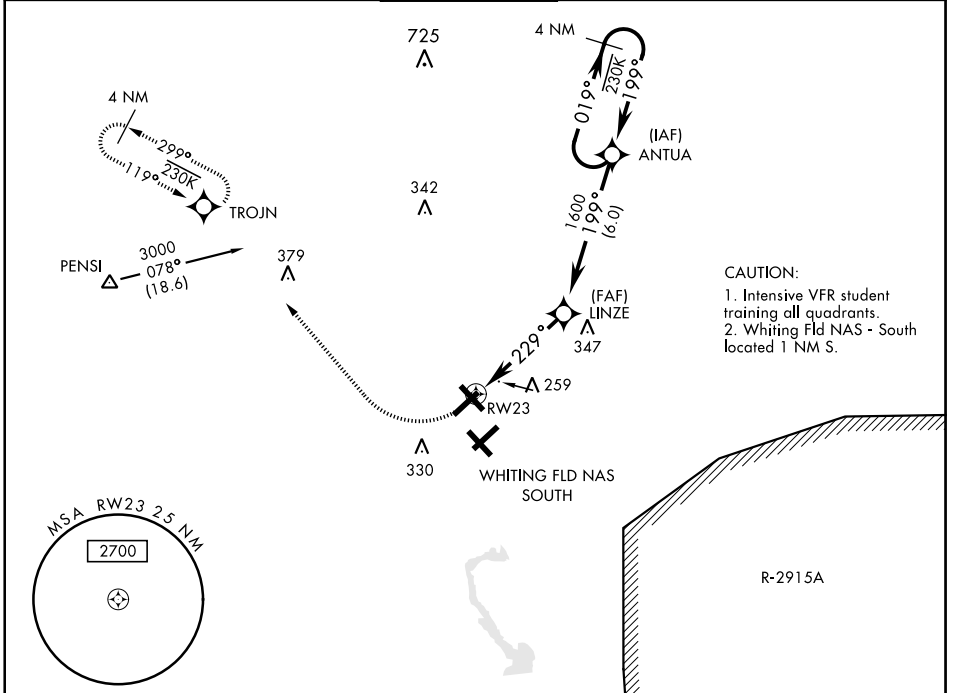
WHITING FLD NAS - NORTH (KNSE)

RNP APCH

* Circling not authorized in sector SE of Rwy 5-23 and SW of Rwy 14-32.

MISSED APPROACH: Climb to 700, then climbing right turn to 3000 direct TROJN and hold. Continue climb in hold. Contact Pensacola APP CON.

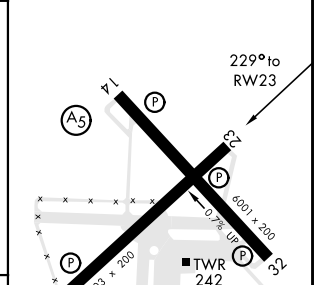
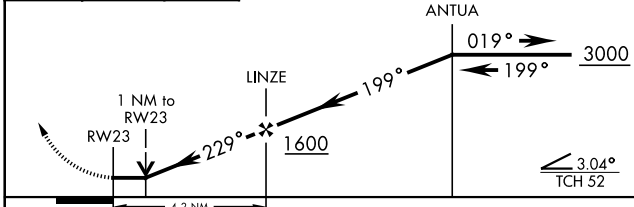
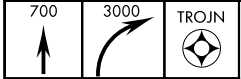
ATIS ★ 290.325	PENSACOLA APP CON 127.35 278.8	NORTH WHITING TOWER ★ 121.4 306.925	GND CON 251.15	CLNC DEL 257.775	ASR
--------------------------	--	--	--------------------------	----------------------------	-----



SE-3, 09 SEP 2021 to 07 OCT 2021

SE-3, 09 SEP 2021 to 07 OCT 2021

ELEV 199	TDZE 183
----------	----------



CATEGORY	A	B	C	D
LNAV MDA		540-1	357	(400-1)
CIRCLING*	600-1 401 (500-1)	660-1 461 (500-1)	660-1½ 461 (500-1½)	760-2 561 (600-2)

HIRL all Rwy

MILTON, FLORIDA
Amdt 3 10SEP20

30°43'N-87°01'W

RNAV (GPS) RWY 23