

TACAN RWY 14

TACAN NSE Chan 70	APCH CRS 127°	Rwy Ldg TDZE Arprt Elev	6001 199 199
-----------------------------	-------------------------	-------------------------------	---

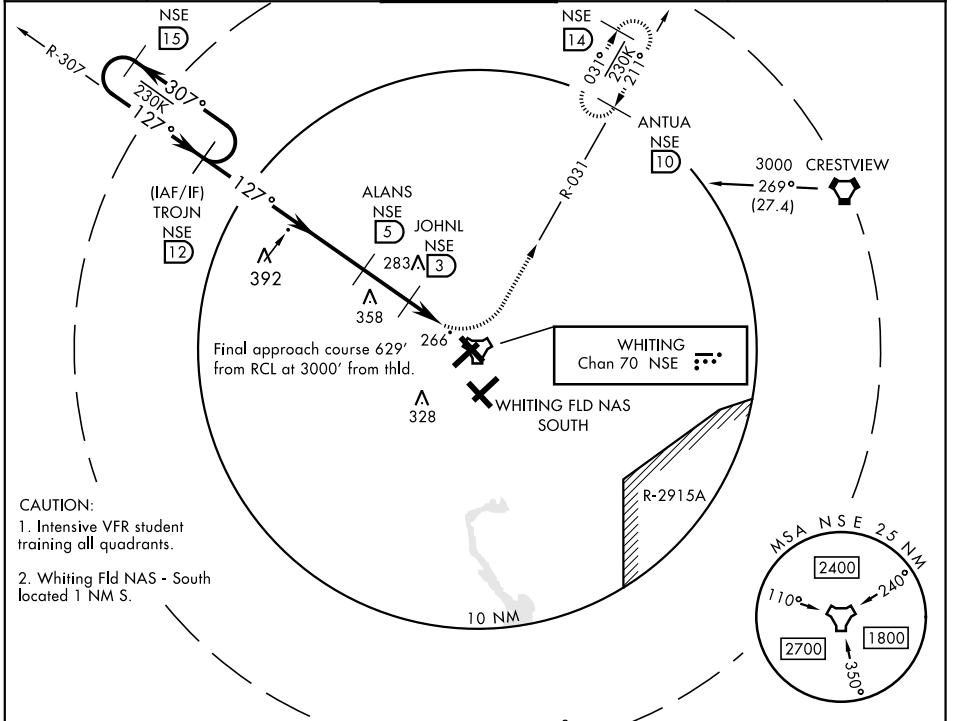
AL-602 [USN]

WHITING FLD NAS - NORTH (KNSE)

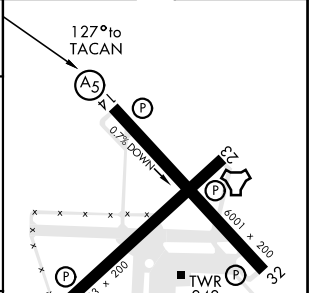
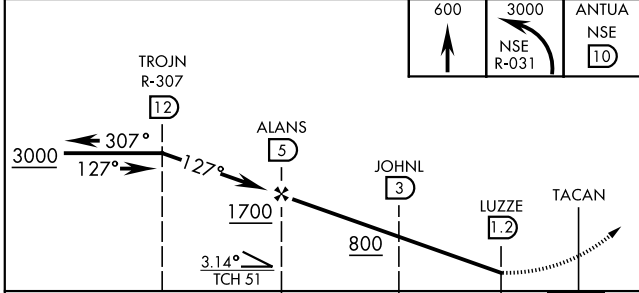
▼ * Circling not authorized in sector SE of Rwy 5-23 and SW of Rwy 14-32.

MALSR (A5) MISSED APPROACH: Climb to 600, then climbing left turn to 3000, intercept NSE TACAN R-031 to ANTUA and hold. Continue climb in hold. Contact Pensacola APP CON.

ATIS ★ 290.325	PENSACOLA APP CON 127.35 278.8	NORTH WHITING TOWER ★ 121.4 306.925	GND CON 251.15	CLNC DEL 257.775	ASR
--------------------------	--	--	--------------------------	----------------------------	-----



ELEV 199	TDZE 199
----------	----------



CATEGORY	A	B	C	D
S-14		520 - 1	321	(400 - 1)
CIRCLING*	600-1 401 (500-1)	660-1 461 (500-1)	660-1½ 461 (500-1½)	760-2 561 (600-2)

HIRL all Rwy

TACAN RWY 14

SE-3, 09 SEP 2021 to 07 OCT 2021

SE-3, 09 SEP 2021 to 07 OCT 2021