

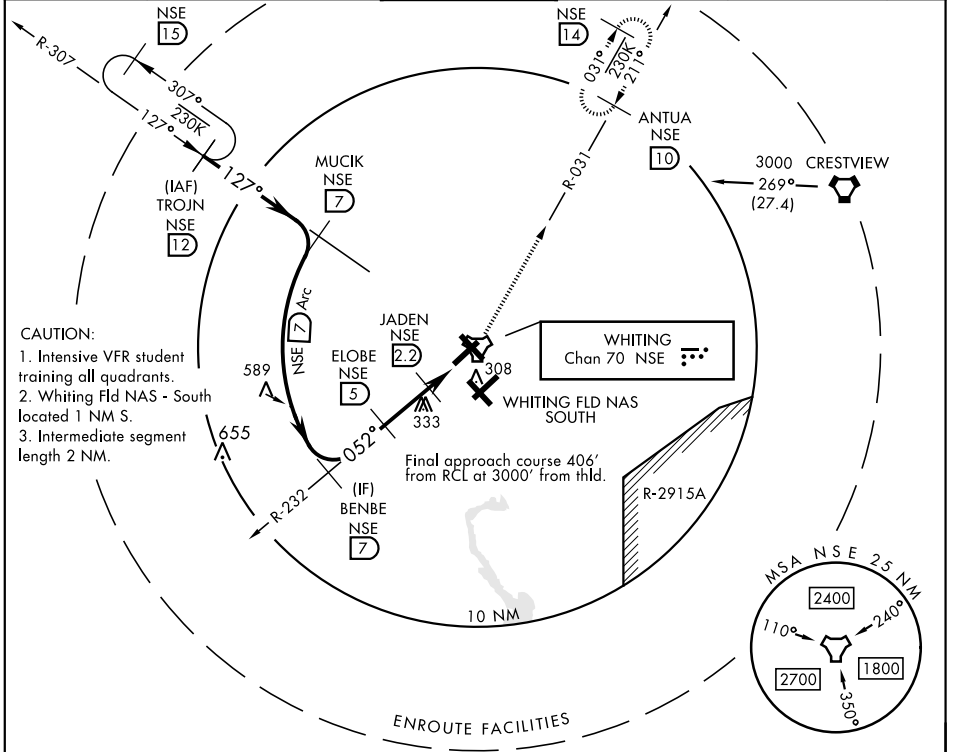
TACAN RWY 5

TACAN NSE Chan 70	APCH CRS 052°	Rwy ldg TDZE Arprt Elev 6003 180 199	AL-602 [USN]	WHITING FLD NAS - NORTH (KNSE)
-----------------------------	-------------------------	--	--------------	--------------------------------

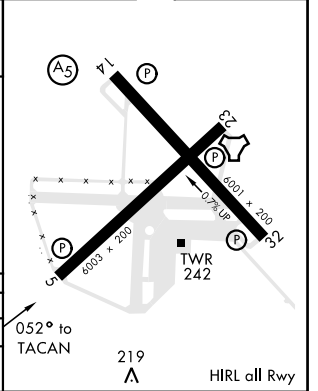
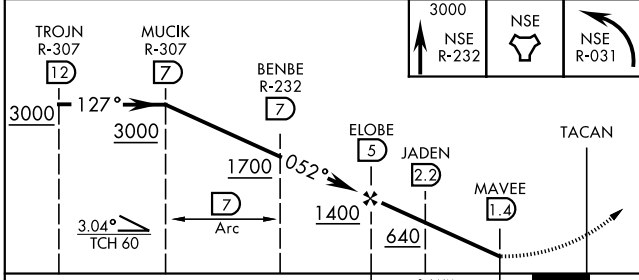
* Circling not authorized in sector SE of Rwy 5-23 and SW of Rwy 14-32.

 MISSED APPROACH: Climb to 3000 via R-232 to NSE TACAN. Then via NSE TACAN R-031 to ANTUA and hold. Continue climb in hold. Contact Pensacola APP CON.

ATIS ★ 290.325	PENSACOLA APP CON 127.35 278.8	NORTH WHITING TOWER ★ 121.4 306.925	GND CON 251.15	CLNC DEL 257.775	ASR
--------------------------	--	---	--------------------------	----------------------------	-----



EMERG SAFE ALT 100 NM 3500 ELEV 199 | TDZE 180



CATEGORY	A	B	C	D
S-5		520-1	340 (400-1)	
CIRCLING *	600-1 401 (400-1)	660-1 461 (500-1)	660-1½ 461 (500-1½)	760-2 561 (600-2)

TACAN RWY 5

SE-3, 09 SEP 2021 to 07 OCT 2021

SE-3, 09 SEP 2021 to 07 OCT 2021