


WAAS CH <b>40121</b> <b>W14A</b>	APP CRS <b>139°</b>	Rwy Idg <b>8000</b> TDZE <b>1260</b> Apt Elev <b>1268</b>
--	------------------------	---

# RNAV (GPS) RWY 14

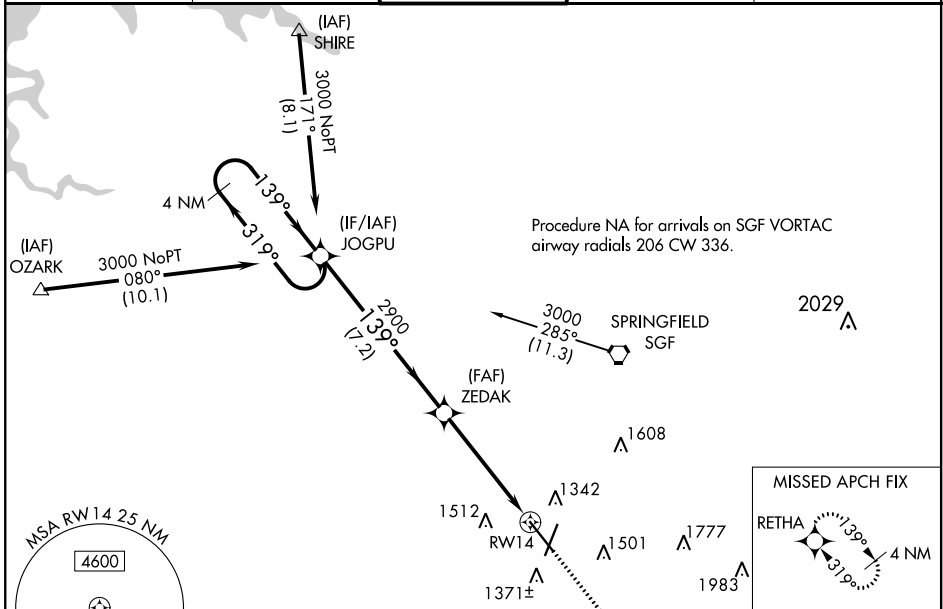
SPRINGFIELD-BRANSON NTL (SGF)

**▼** Inoperative table does not apply to LPV all Cats. For uncompensated Baro-VNAV systems, LNAV/VNAV NA below -21°C (-5°F) or above 54°C (130°F). DME/DME RNP-0.3 NA. Helicopter visibility reduction below ¾ SM NA. For inoperative MALSR, increase LNAV/VNAV all Cats visibility to 1½, increase LNAV Cat A/B visibility to 1.

**MALSR**  


**MISSED APPROACH:** Climb to 3000 direct RETHA and hold.

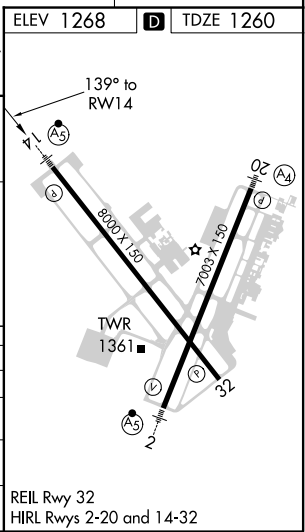
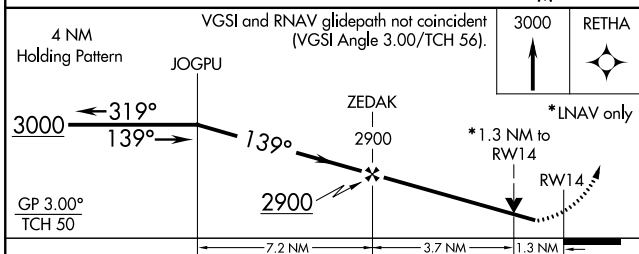
ATIS <b>135.125</b>	SPRINGFIELD APP CON <b>121.1 290.5</b>	SPRINGFIELD TOWER <b>119.9 257.8</b>	GND CON <b>121.9 251.15</b>	CLNC DEL <b>123.675</b>
------------------------	---	---	--------------------------------	----------------------------



NC-3, 09 SEP 2021 to 07 OCT 2021

NC-3, 09 SEP 2021 to 07 OCT 2021

ELEV 1268	<b>D</b> TDZE 1260
-----------	--------------------



CATEGORY	A	B	C	D
LPV DA		1518-¾	258 (300-¾)	
LNAV/VNAV DA		1620-¾	360 (400-¾)	
LNAV MDA	1720-¾	460 (500-¾)	1720-7/8	460 (500-7/8)
<b>C</b> CIRCLING	1760-1 492 (500-1)	1820-1 552 (600-1)	1820-1½ 552 (600-1½)	1920-2 652 (700-2)