

APP CRS	Rwy Idg	7200
137°	TDZE	579
	Apt Elev	589

RNAV (GPS) RWY 14

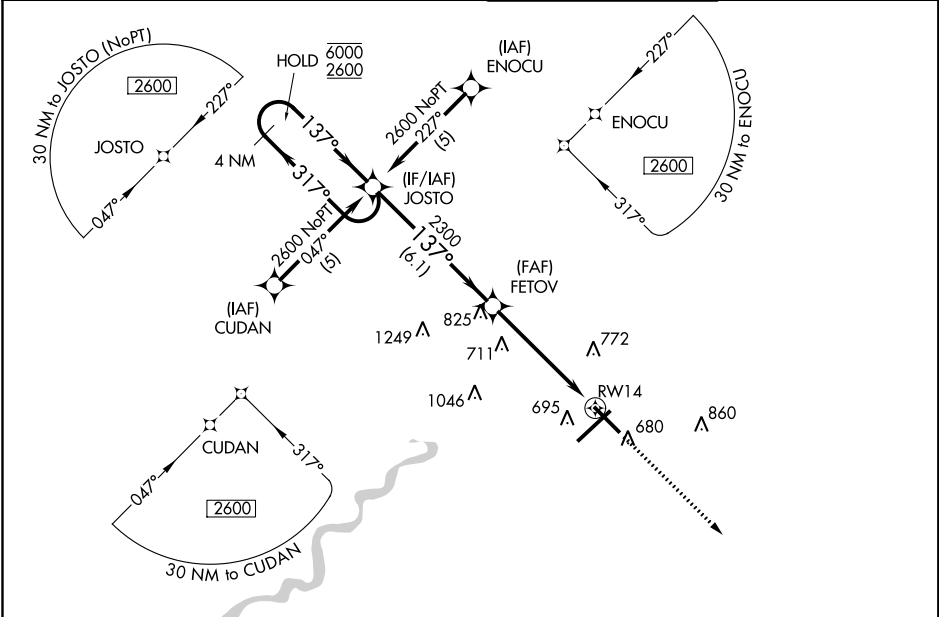
TERRE HAUTE RGNL (HUF')

RNP APCH.

V VDP NA when using Paris altimeter setting. When local altimeter setting not received, use Paris altimeter setting and increase all MDA 80 feet, increase LNAV and Circling Cat C/D visibility 1/4 SM. Rwy 14 helicopter visibility reduction below 3/4 SM NA.
A ASR

MISSED APPROACH:
 Climb to 2600 direct CORIE and hold.

ATIS 127.5 269.375	HULMAN APP CON 125.45 339.8	HULMAN TOWER 134.725 239.0	GND CON 121.6 348.6
------------------------------	---------------------------------------	--------------------------------------	-------------------------------



EC-2, 09 SEP 2021 to 07 OCT 2021

EC-2, 09 SEP 2021 to 07 OCT 2021

