

SC-4, 09 SEP 2021 to 07 OCT 2021

**ARRIVAL ROUTE DESCRIPTION**

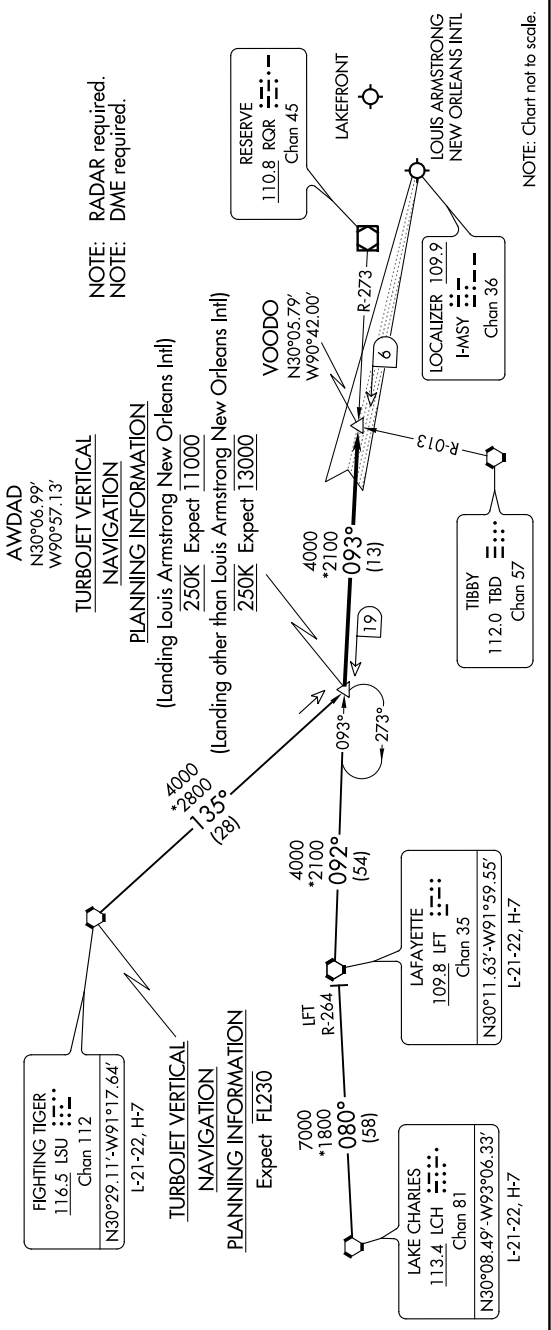
**FIGHTING TIGER TRANSITION [LSU.AWDAD1]:** From over LSU VORTAC on LSU R-135 to AWDAD INT.

**LAFAYETTE TRANSITION [LFT.AWDAD1]:** From over LFT VOTRAC on LFT R-092 and RQR R-273 to AWDAD INT.

**LAKE CHARLES TRANSITION [LCH.AWDAD1]:** From over LCH VORTAC on LCH R-080 and LFT R-264 to LFT VORTAC then on LFT R-092 and RQR R-273 to AWDAD INT.

From over AWDAD INT on RQR VOR/DME R-273 to VOODO INT.  
 LANDING KMSY RWY 11: Intercept I-MSY localizer and expect clearance for ILS RWY 11 approach.  
**LANDING OTHER:** Expect vectors to final approach course.

NEW ORLEANS APP CON  
 125.5 350.35 (WEST)  
 133.15 290.3 (EAST)  
 MSY D-ATIS  
 127.55  
 NEW ATIS  
 124.9



SC-4, 09 SEP 2021 to 07 OCT 2021