

LOC/DME I-HOX <b>109.9</b> Chan <b>36</b>	APP CRS <b>286°</b>	Rwy Idg <b>9800</b> TDZE <b>2</b> Apt Elev <b>4</b>
---	------------------------	---

# ILS or LOC RWY 29

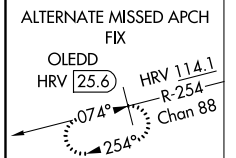
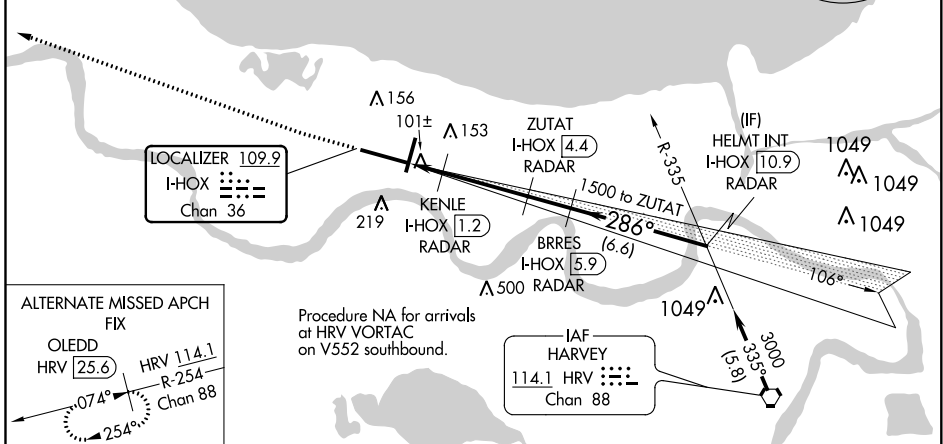
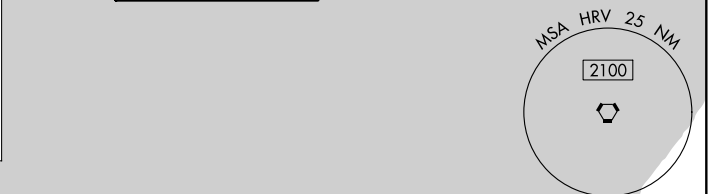
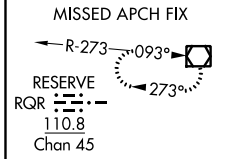
## LOUIS ARMSTRONG NEW ORLEANS INTL (MSY)

**▼** DME or RADAR required. For inop MALSR, increase S-LOC 29 Cat C/D visibility to 1 1/2 mile and increase KENLE Fix Minimums S-LOC 29 Cat C/D visibility to RVR 5500.  
**\*\*RVR 1800 authorized with use of FD or AP or HUD to DA.**

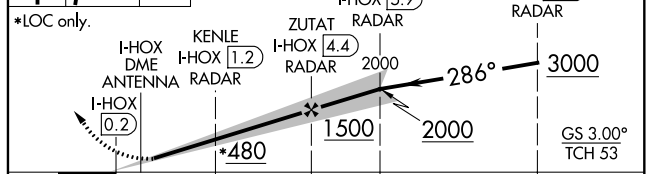
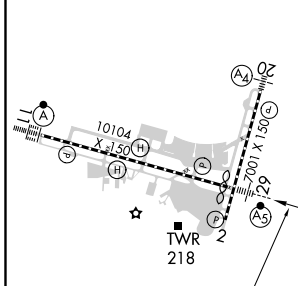
**MALSR**

**MISSED APPROACH:** Climb to 600 then climbing right turn to 3000 direct RQR VOR/DME and hold.

D-ATIS <b>127.55</b>	NEW ORLEANS APP CON WEST <b>125.5 350.35</b> EAST <b>133.15 290.3</b>	NEW ORLEANS TOWER <b>119.5 254.3</b>	GND CON <b>121.9 273.525</b>	CLNC DEL <b>120.925</b>	CPDLC
-------------------------	---	---	---------------------------------	----------------------------	-------



ELEV 4	<b>D</b>	TDZE 2	600	3000	RQR	VGSI and ILS glidepath not coincident (VGSI Angle 3.00/TCH 68).	HELMT INT I-HOX [10.9] RADAR
--------	----------	--------	-----	------	-----	---	------------------------------



CATEGORY	A	B	C	D
S-ILS 29 **	202/24 200 (200-1/2)			
S-LOC 29	480/24	478 (500-1/2)	480/50	478 (500-1)
<b>C</b> CIRCLING	520-1	516 (600-1)	580-1 1/2 576 (600-1 1/2)	600-2 596 (600-2)
KENLE FIX MINIMUMS				
S-LOC 29	360/24	358 (400-1/2)	360/30	358 (400-3/4)
<b>C</b> CIRCLING	520-1	516 (600-1)	580-1 1/2 576 (600-1 1/2)	600-2 596 (600-2)

SC-4, 09 SEP 2021 to 07 OCT 2021

SC-4, 09 SEP 2021 to 07 OCT 2021