

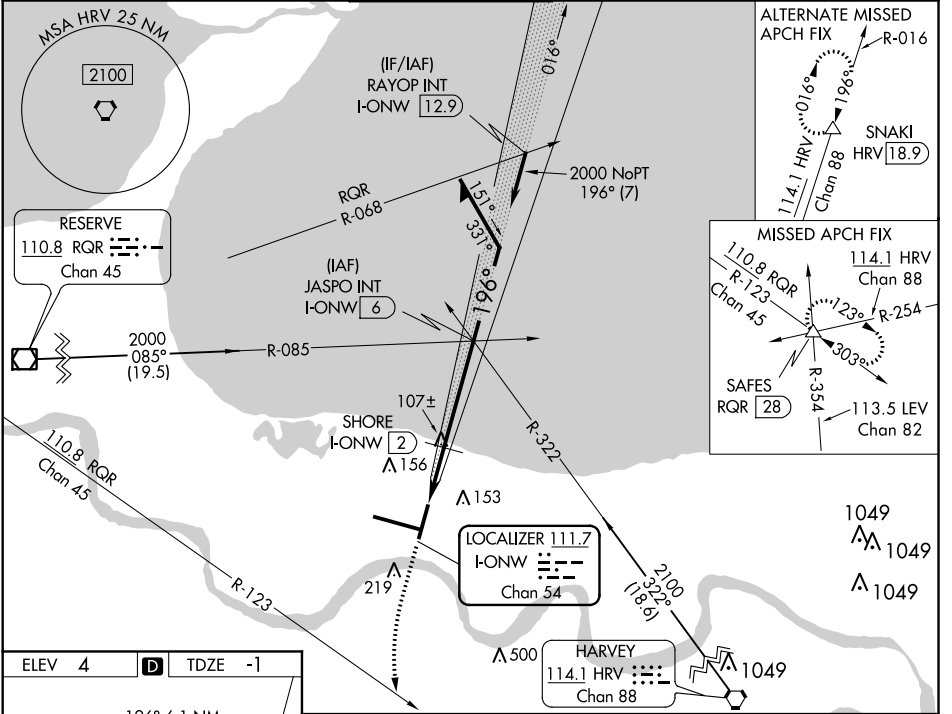
LOC/DME I-ONW 111.7 Chan 54	APP CRS 196°	Rwy Idg 7001 TDZE -1 Apt Elev 4
---	------------------------	--

LOC RWY 20

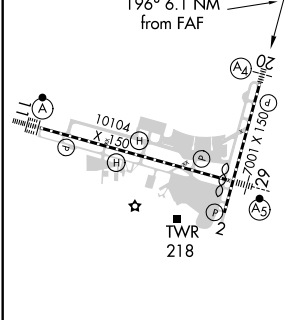
LOUIS ARMSTRONG NEW ORLEANS INTL (MSY)

<p>▼ For inop MALS when using SHORE Fix Minimums, increase S-20 Cat D visibility to RVR 5500. Helicopter visibility reduction below RVR 4000 NA. For inop MALS, increase S-20 Cat D visibility to 2 miles.</p>	<p>MALS (A)</p>	<p>MISSED APPROACH: Climb to 1300 then climbing left turn to 2000 on heading 180° and RQR VOR/DME R-123 to SAFES INT/RQR 28 DME and hold.</p>
---	----------------------------	---

D-ATIS 127.55	NEW ORLEANS APP CON WEST 125.5 350.35 EAST 133.15 290.3	NEW ORLEANS TOWER 119.5 254.3	GND CON 121.9 273.525	CLNC DEL 120.925	CPDLC
-------------------------	---	---	---------------------------------	----------------------------	-------



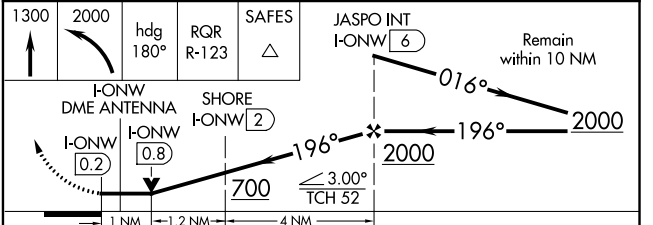
ELEV 4	D	TDZE -1
---------------	----------	----------------



RLS Rwy 2
TDZ/CL Rwy 11
HIRL All Runways

FAF to MAP 6.1 NM

Knots	60	90	120	150	180
Min:Sec	6:06	4:04	3:03	2:26	2:02



CATEGORY	A	B	C	D
S-20	700/40	701 (700-¾)	700-1¾	701 (700-1¾)
C CIRCLING	700-1	696 (700-1)	700-2 696 (700-2)	700-2¼ 696 (700-2¼)
SHORE FIX MINIMUMS				
S-20	360/40		361 (400-¾)	
C CIRCLING	520-1	516 (600-1)	580-1½ 576 (600-1½)	600-2 596 (600-2)

SC-4, 09 SEP 2021 to 07 OCT 2021

SC-4, 09 SEP 2021 to 07 OCT 2021