

WAAS CH <b>49220</b> <b>W02A</b>	APP CRS <b>016°</b>	Rwy Idg <b>7001</b> TDZE <b>2</b> Apt Elev <b>4</b>
--	------------------------	---

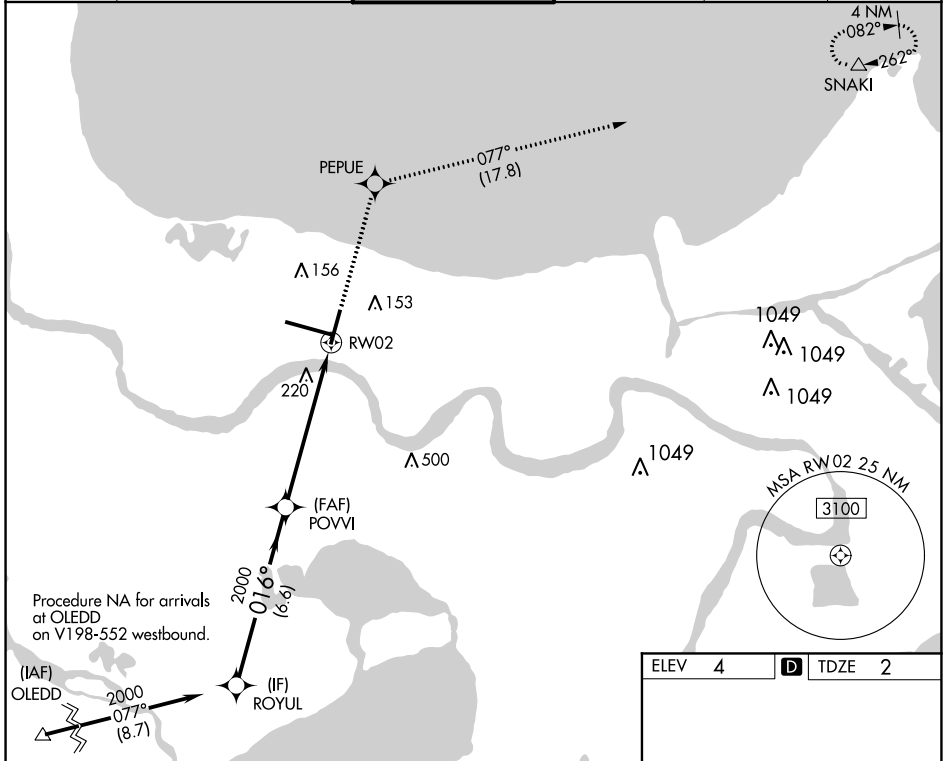
# RNAV (GPS) RWY 2

LOUIS ARMSTRONG NEW ORLEANS INTL (MSY)

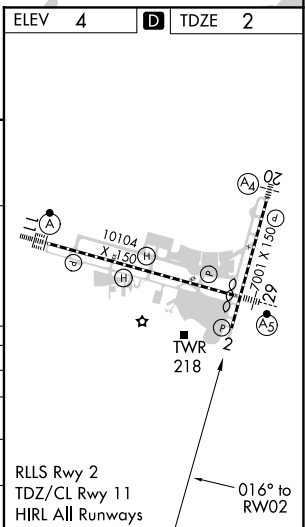
**▼** For uncompensated Baro-VNAV systems, LNAV/VNAV NA below -1°C (31°F) or above 54°C (130°F). DME/DME RNP-0.3 NA. Helicopter visibility reduction below RVR 4000 NA.

MISSED APPROACH: Climb to 3000 direct PEPUE and on track 077° to SNAKI and hold.

D-ATIS <b>127.55</b>	NEW ORLEANS APP CON WEST <b>125.5 350.35</b> EAST <b>133.15 290.3</b>	NEW ORLEANS TOWER <b>119.5 254.3</b>	GND CON <b>121.9 273.525</b>	CLNC DEL <b>120.925</b>	CPDLC
-------------------------	---	---	---------------------------------	----------------------------	-------



	ROYUL	POVVI	3000	PEPUE	tr 077°	SNAKI
	2000	2000		*1.3 NM to RWY02		*LNAV only.
	GP 3.00° TCH 52	2000				
		6.6 NM	4.8 NM	1.3 NM		
CATEGORY	A	B	C	D		
LPV DA		398-1¼	396 (400-1¼)			
LNAV/VNAV DA		379-1¼	377 (400-1¼)			
LNAV MDA	480/55	478 (500-1)	480-1⅜ 478 (500-1⅝)			
<b>C</b> CIRCLING	520-1	516 (600-1)	580-1½ 576 (600-½)	600-2 596 (600-2)		



SC-4, 09 SEP 2021 to 07 OCT 2021

SC-4, 09 SEP 2021 to 07 OCT 2021