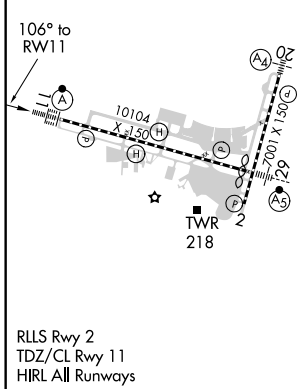
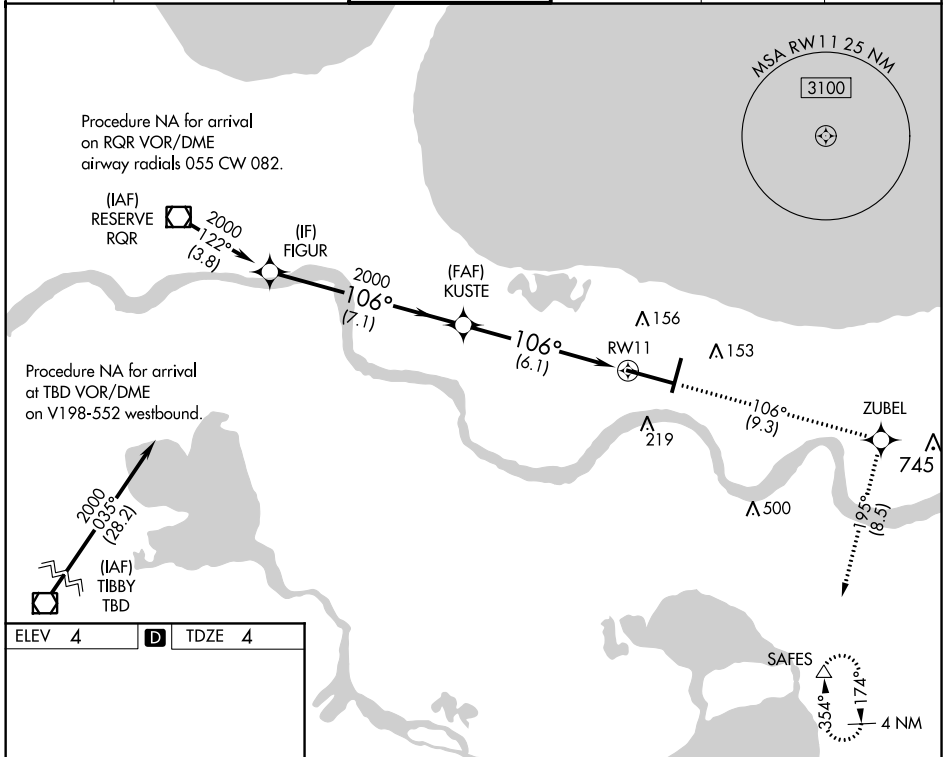


APP CRS	Rwy Idg	<b>9800</b>
<b>106°</b>	TDZE	<b>4</b>
	Apt Elev	<b>4</b>

# RNAV (RNP) Z RWY 11

LOUIS ARMSTRONG NEW ORLEANS INTL (MSY)

<p>▼ For uncompensated Baro-VNAV systems, procedure NA below -1°C (31°F) or above 54°C (130°F). GPS required. For inop ALSF-2, increase RNP 0.30 all Cats visibility to RVR 6000.</p>	<p>ALSF-2</p>		<p>MISSED APPROACH: Climb to 2000 on track 106° to ZUBEL and on track 195° to SAFES and hold.</p>		
	<p>D-ATIS</p> <p><b>127.55</b></p>	<p>NEW ORLEANS APP CON</p> <p>WEST <b>125.5 350.35</b></p> <p>EAST <b>133.15 290.3</b></p>	<p>NEW ORLEANS TOWER</p> <p><b>119.5 254.3</b></p>	<p>GND CON</p> <p><b>121.9 273.525</b></p>	<p>CLNC DEL</p> <p><b>120.925</b></p>



	2000	tr 106°	ZUBEL	tr 195°	SAFES
FIGUR	2000				
					RW11
GP 3.00° TCH 55	7.1 NM	6.1 NM			
CATEGORY	A	B	C	D	
RNP 0.14 DA		304/24	300 (300-½)		
RNP 0.30 DA		367/40	363 (400-¾)		
<b>AUTHORIZATION REQUIRED</b>					

SC-4, 09 SEP 2021 to 07 OCT 2021

SC-4, 09 SEP 2021 to 07 OCT 2021