

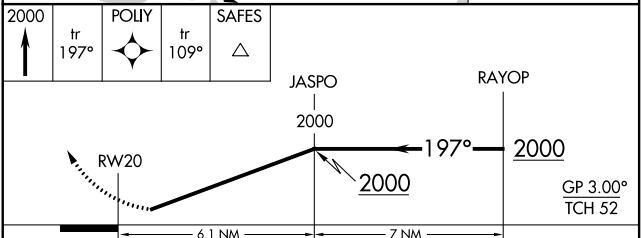
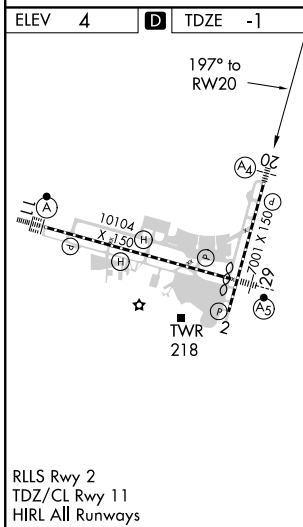
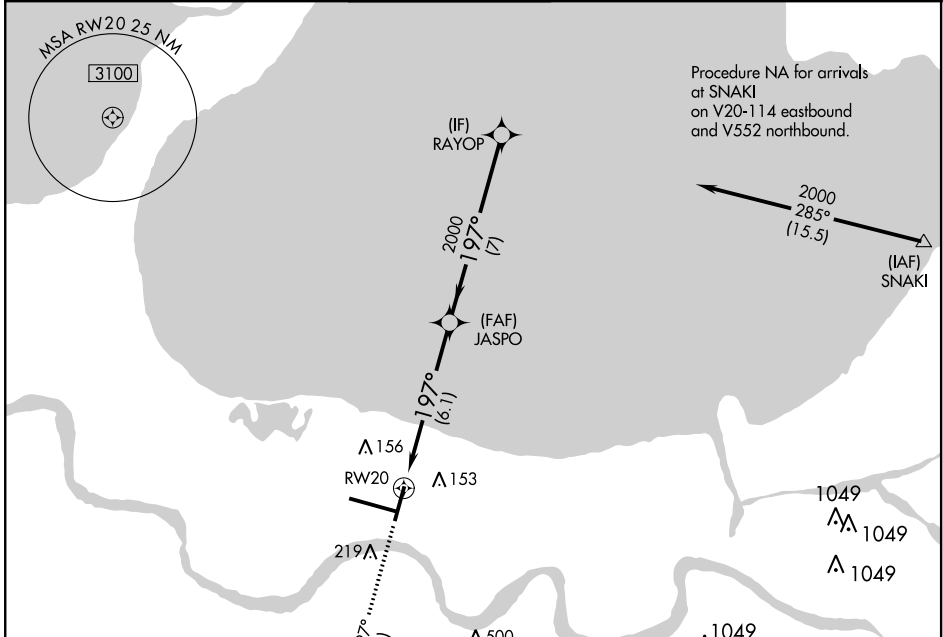
APP CRS 197°	Rwy Idg 7001
	TDZE -1
	Apt Elev 4

RNAV (RNP) Z RWY 20

LOUIS ARMSTRONG NEW ORLEANS INTL (MSY)

<p>▼ For uncompensated Baro-VNAV systems, procedure NA below -1°C (31°F) or above 54°C (130°F). GPS required. For inop MALS, increase RNP 0.11 all Cats visibility to 1¼ mile, increase RNP 0.30 Cat D visibility to 1½ mile.</p>	<p>MALS </p>	<p>MISSED APPROACH: Climb to 2000 on track 197° to POLY and track 109° to SAFES and hold.</p>
---	--------------	---

D-ATIS 127.55	NEW ORLEANS APP CON WEST 125.5 350.35 EAST 133.15 290.3	NEW ORLEANS TOWER 119.5 254.3	GND CON 121.9 273.525	CLNC DEL 120.925	CPDLC
-------------------------	---	---	---------------------------------	----------------------------	-------



CATEGORY	A	B	C	D
RNP 0.11 DA		363/45	364 (400-¾)	
RNP 0.30 DA		414/60	415 (500-1¼)	

AUTHORIZATION REQUIRED

SC-4, 09 SEP 2021 to 07 OCT 2021

SC-4, 09 SEP 2021 to 07 OCT 2021