

WAAS CH 40007 W20A	APP CRS 197°	Rwy Idg 7001 TDZE -1 Apt Elev 4
--	------------------------	--

RNAV (GPS) Y RWY 20

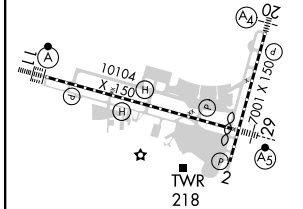
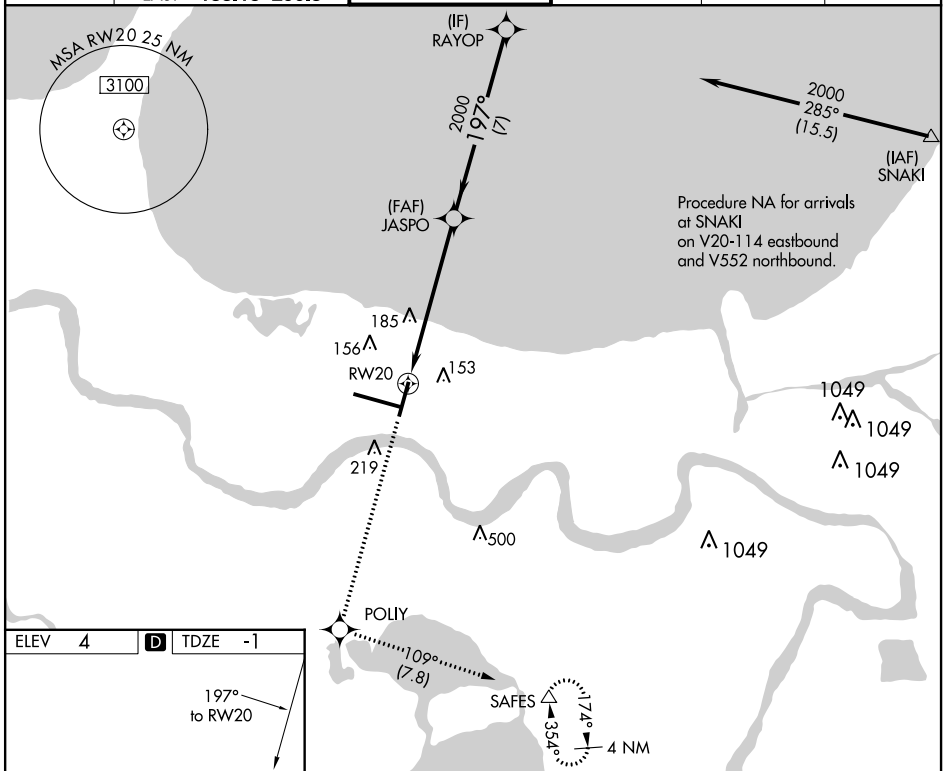
LOUIS ARMSTRONG NEW ORLEANS INTL (MSY)

▼ For uncompensated Baro-VNAV systems, LNAV/VNAV NA below -1°C (31°F) or above 54°C (130°F). DME/DME RNP-0.3 NA. Helicopter visibility reduction below RVR 4000 NA. For inop MALS, increase LNAV/VNAV Cat D visibility to RVR 5000; increase LNAV Cat C/D visibility to 1½ mile.



MALS
MISSED APPROACH:
Climb to 2000 direct
POLY and on track 109°
to SAFES and hold.

D-ATIS 127.55	NEW ORLEANS APP CON WEST 125.5 350.35 EAST 133.15 290.3	NEW ORLEANS TOWER 119.5 254.3	GND CON 121.9 273.525	CLNC DEL 120.925	CPDLC
-------------------------	---	---	---------------------------------	----------------------------	-------



2000	POLY	tr 109°	SAFES	JASPO	RAYOP
↑	◆	↔	△	2000	2000
*LNAV only.		*1.3 NM to RWY 20		GP 3.00° TCH 52	
1.3 NM		4.8 NM		7 NM	

CATEGORY	A	B	C	D
LPV DA		249/40	250 (300-¾)	
LNAV/VNAV DA		325/40	326 (400-¾)	
LNAV MDA	460/40	461 (500-¾)	460/55	461 (500-1)
Ⓢ CIRCLING	520-1	516 (600-1)	580-1½ 576 (600-1½)	600-2 596 (600-2)

SC-4, 09 SEP 2021 to 07 OCT 2021

SC-4, 09 SEP 2021 to 07 OCT 2021