

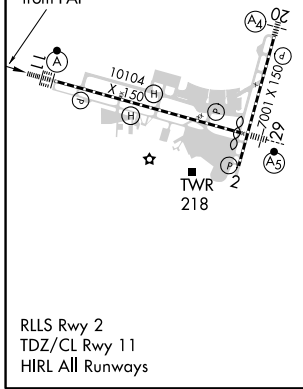
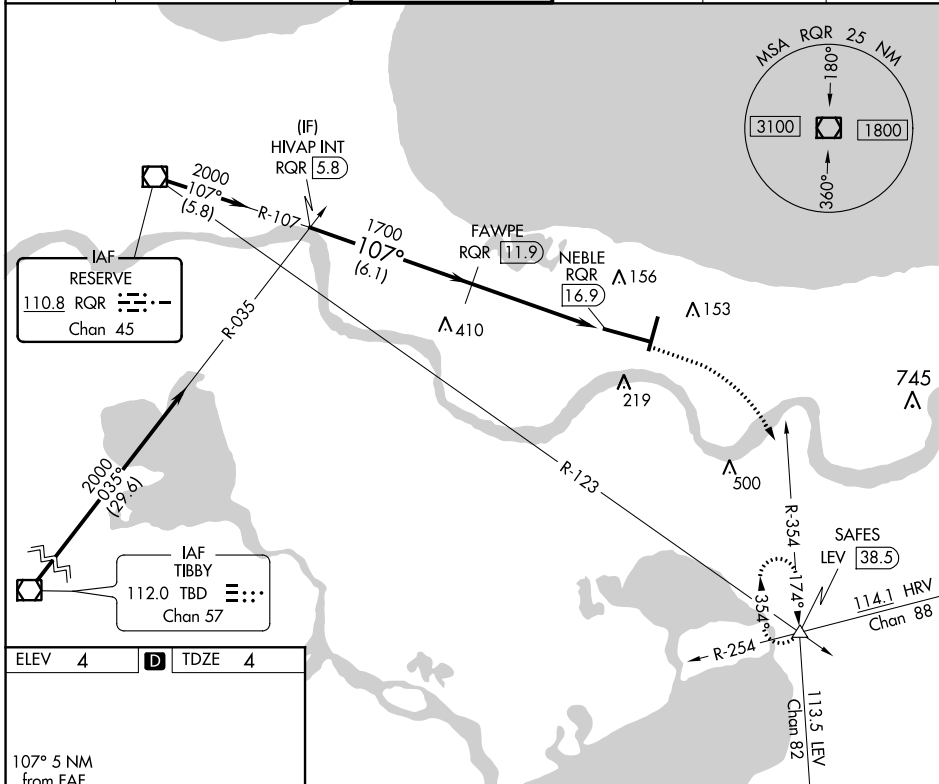
VOR/DME RQR	APP CRS	Rwy Idg	9800
110.8	107°	TDZE	4
Chan 45		Apt Elev	4

VOR/DME RWY 11

LOUIS ARMSTRONG NEW ORLEANS INTL (MSY)

	MISSED APPROACH: Climb to 800 then climbing right turn to 2000 on heading 130° and LEV VORTAC R-354 to SAFES INT/LEV 38.5 DME and hold.			

D-ATIS	NEW ORLEANS APP CON	NEW ORLEANS TOWER	GND CON	CLNC DEL	CPDLC
127.55	WEST 125.5 350.35 EAST 133.15 290.3	119.5 254.3	121.9 273.525	120.925	



ELEV 4	D	TDZE 4	VGSIs and descent angles not coincident (VGSi Angle 2.80/TCH 55).			
HIVAP INT RQR (5.8)			800 ↑	2000 hdg 130°	LEV R-354	SAFES △
2000			FAWPE RQR (11.9)	RQR (15.5)	NEBLE RQR (16.9)	
1700			3.09° TCH 55			
6.1 NM			3.7 NM	1.3 NM		
CATEGORY	A	B	C	D		
S-11	460/24		456 (500-1/2)			
C CIRCLING	520-1	516 (600-1)	580-1 1/2	576 (600-1 1/2)	600-2	596 (600-2)

SC-4, 09 SEP 2021 to 07 OCT 2021

SC-4, 09 SEP 2021 to 07 OCT 2021