

| | | | |
|-------------------|-------------|----------|-------------|
| LOC I- IAG | APP CRS | Rwy ldg | 9129 |
| 110.1 | 280° | TDZE | 588 |
| | | Apt Elev | 592 |

ILS Z or LOC Z RWY 28R

NIAGARA FALLS INTL (IAG)

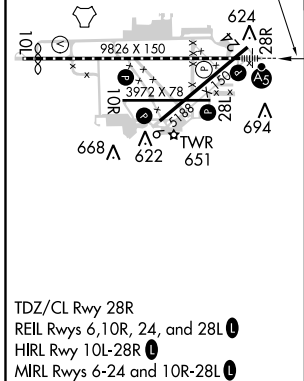
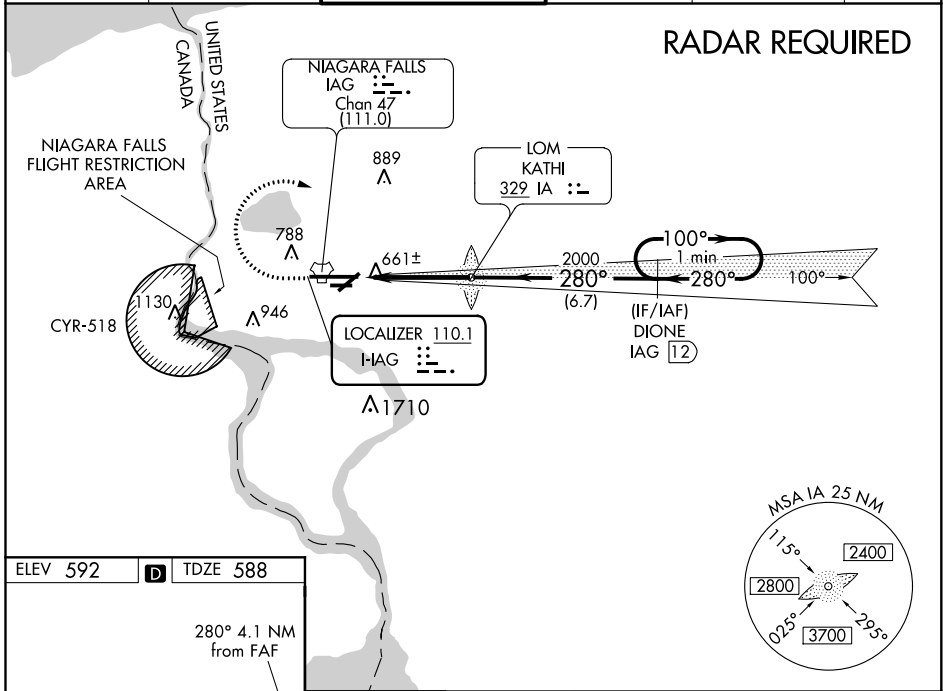
▼ When local altimeter setting not received, use Buffalo Niagara Intl altimeter setting and increase all DA 51 feet and all MDA 60 feet; increase Circling Cat C and D visibility ¼ SM. For inop MALS, increase S-ILS 28R all Cats visibility to RVR 4500 and S-LOC 28R all Cats visibility to RVR 5000. For inop MALS when using Buffalo Niagara Intl altimeter setting, increase S-ILS 28R all Cats visibility to RVR 4500, S-LOC 28R Cats A/B visibility to RVR 5000, and S-LOC 28R Cats C/D visibility to RVR 6000. DME required. Rwy 28R helicopter visibility reduction below ¾ SM NA. Rwy 6, 10R, 24, 28L, helicopter visibility reduction below 1 SM NA. Circling Rwy 6, 10R, 24, 28L NA at night.

MALS



MISSED APPROACH: Climb to 1200 then climbing right turn to 3200 on heading 120° and I-AG E course to DIONE/IAG 12 DME and hold.

| | | | | | |
|--------------------|--------------------|-----------------------------|--------------------|---------------------|---------------|
| ATIS | BUFFALO APP CON | NIAGARA TOWER* | GND CON | CLNC DEL | UNICOM |
| 120.8 269.4 | 126.5 317.6 | 118.5 (CTAF) 0 349.0 | 125.3 275.8 | 119.25 251.1 | 122.95 |



| | | | | | |
|-----------------------------|------------------------|--------------------|----------------------|----------------------|----------------------------|
| ELEV 592 | D | TDZE 588 | | | |
| <p>280° 4.1 NM from FAF</p> | | | | | |
| 1200 | 3200 | HAG E-crsc | DIONE IAG 12 | DIONE IAG 12 | One Minute Holding Pattern |
| <p>hdg 120°</p> | | <p>IA LOM 1763</p> | | | |
| <p>IAG 1.3</p> | | <p>2000</p> | | | |
| <p>4.1 NM</p> | | <p>6.7 NM</p> | | | |
| 2200 | <p>GS 2.50° TCH 67</p> | | <p>100° → ← 280°</p> | | |
| CATEGORY | A | B | C | D | |
| S-ILS 28R | 838/40 250 (300-¾) | | | | |
| S-LOC 28R | 920/40 332 (400-¾) | | | | |
| CIRCLING | 1100-1 | 508 (600-1) | 1280-2 | 1280-2¼ 688 (700-2¼) | |

NE-2, 09 SEP 2021 to 07 OCT 2021

NE-2, 09 SEP 2021 to 07 OCT 2021