


LOM IA	APP CRS	Rwy ldg	9129
329	280°	TDZE	588
		Apt Elev	592

NDB RWY 28R

NIAGARA FALLS INTL (IAG)

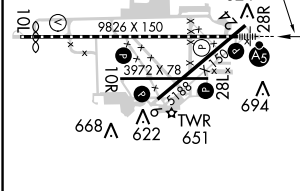
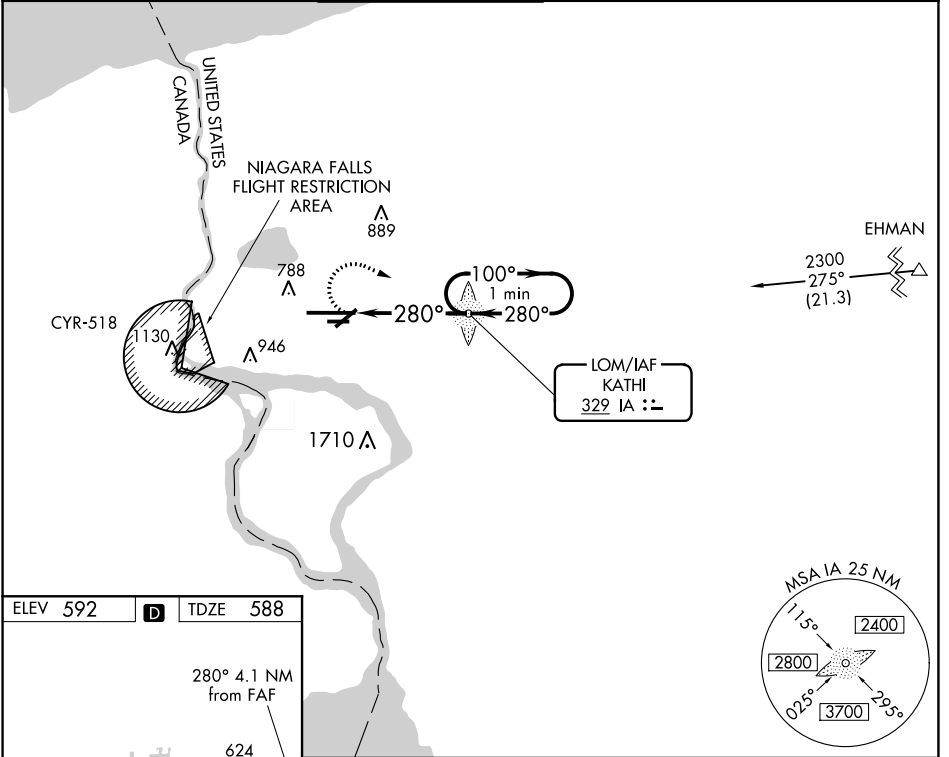
⚠ When local altimeter setting not received, use Buffalo Niagara Intl altimeter setting and increase all MDA 60 feet, increase S-28R Cat C and D visibility $\frac{1}{8}$ SM and Circling Cat C and D $\frac{1}{4}$ SM. For inop MALS, increase S-28R Cats A/B visibility to RVR 5500 and Cats C/D visibility to $\frac{1}{2}$. For inop MALS when using Buffalo Niagara Intl altimeter setting, increase S-28R Cats C/D visibility to $\frac{1}{8}$. Rwy 28R helicopter visibility reduction below $\frac{1}{4}$ SM NA. Rwy 6, 10R, 24, 28L helicopter visibility reduction below 1 SM NA. Circling Rwy 6, 10R, 24, 28L NA at night.

MALS R



MISSED APPROACH:
Climbing right turn to 3200 direct KATHI LOM and hold, continue climb-in-hold to 3200.

ATIS	BUFFALO APP CON	NIAGARA TOWER★	GND CON	CLNC DEL	UNICOM
120.8 269.4	126.5 317.6	118.5 (CTAF) 0 349.0	125.3 275.8	119.25 251.1	122.95

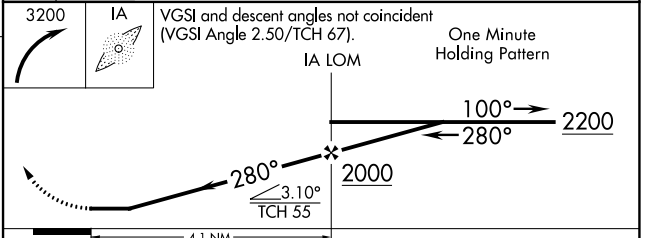


ELEV 592 **D** TDZE 588

TDZ/CL Rwy 28R
REIL Rws 6, 10R, 24, and 28L **Ⓛ**
HIRL Rwy 10L-28R **Ⓛ**
MIRL Rws 6-24 and 10R-28L **Ⓛ**

FAF to MAP 4.1 NM

Knots	60	90	120	150	180
Min:Sec	4:06	2:44	2:03	1:38	1:22



CATEGORY	A	B	C	D
S-28R	1200/40	612 (700- $\frac{3}{4}$)	1200-1 $\frac{3}{8}$	612 (700-1 $\frac{3}{8}$)
C CIRCLING	1200-1	608 (700-1)	1280-2 688 (700-2)	1280-2 $\frac{1}{4}$ 688 (700-2 $\frac{1}{4}$)

NE-2, 09 SEP 2021 to 07 OCT 2021

NE-2, 09 SEP 2021 to 07 OCT 2021