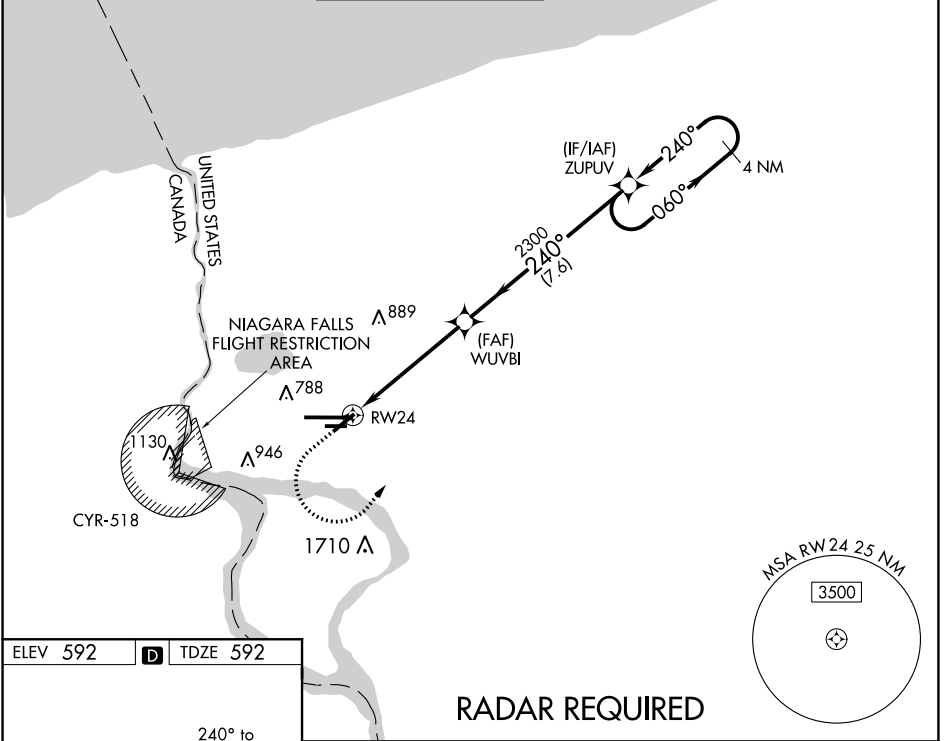


WAAS CH 97333 W24B	APP CRS 240°	Rwy ldg TDZE Apt Elev	5108 592 592
--	------------------------	-----------------------------	---

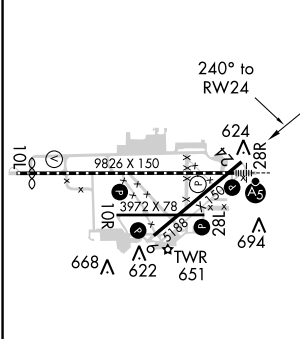
RNAV (GPS) Y RWY 24

NIAGARA FALLS INTL (IAG)

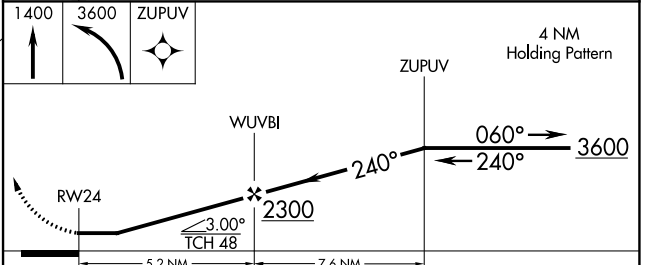
<p>▽ DME/DME RNP-0.3 NA. When local altimeter setting not received, use Buffalo Niagara Intl altimeter setting and increase all MDA 60 feet and increase LP Cats C and D visibility 1/8 mile and Circling Cats A and D visibility 1/4 mile. Rwy 6, 10R, 24, 28L helicopter visibility reduction below 1 SM NA. Straight-in Rwy 24 NA at night, Circling Rwy 6, 10R, 24, 28L NA at night.</p>		<p>MISSED APPROACH: Climb to 1400 then climbing left turn to 3600 direct ZUPOV and hold.</p>			
ATIS 120.8 269.4	BUFFALO APP CON 126.5 317.6	NIAGARA TOWER★ 118.5 (CTAF) 0 349.0	GND CON 125.3 275.8	CINC DEL 119.25 251.1	UNICOM 122.95



ELEV 592	D	TDZE 592
----------	----------	----------



TDZ/CL Rwy 28R	1180-1	588 (600-1)	1180-1 3/4	588 (600-1 3/4)
REIL Rwys 6, 10R, 24, and 28L	1360-1	768 (800-1)	1360-1 1/4	768 (800-1 1/4)
HIRL Rwy 10L-28R	1360-1	768 (800-1)	1360-1 1/4	768 (800-1 1/4)
MIRL Rwys 6-24 and 10R-28L	1360-1	768 (800-1)	1360-1 1/4	768 (800-1 1/4)



CATEGORY	A	B	C	D
LP MDA	1180-1	588 (600-1)	1180-1 3/4	588 (600-1 3/4)
LNAV MDA	1360-1	768 (800-1)	1360-1 1/4	768 (800-1 1/4)
C CIRCLING	1360-1	768 (800-1)	1360-1 1/4	768 (800-1 1/4)