

LOC I-CKB 109.3	APP CRS 211°	Rwy ldg TDZE Apt Elev	7130 1224 1224
---------------------------	------------------------	-----------------------------	---

ILS or LOC RWY 21

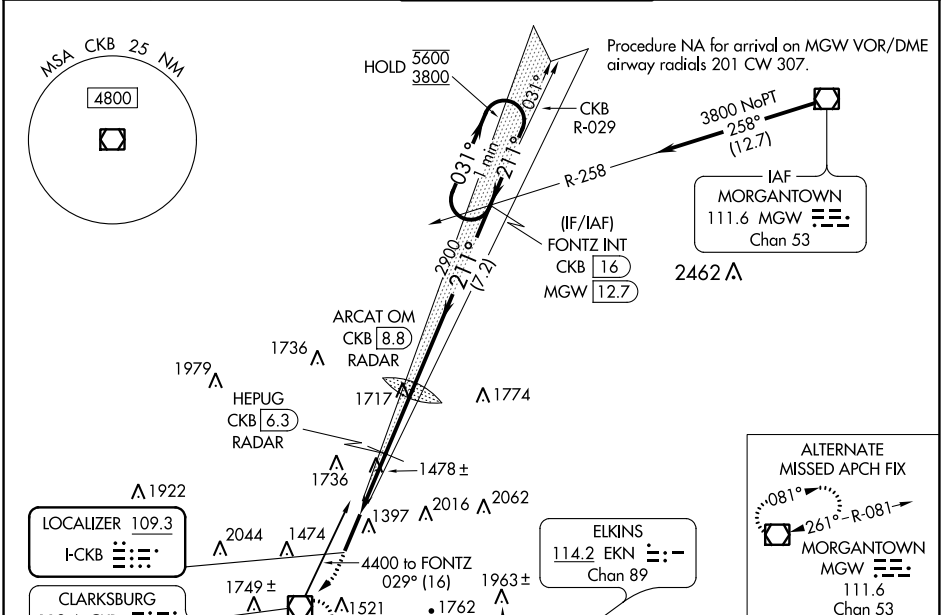
NORTH CENTRAL WEST VIRGINIA (CKB)

⚠ For inop ALS, increase S-LOC 21 Cat C/D visibility to 2½ SM, and HEPUG fix minimums Cat C/D visibility to 1½ SM. DME from CKB VOR/DME.

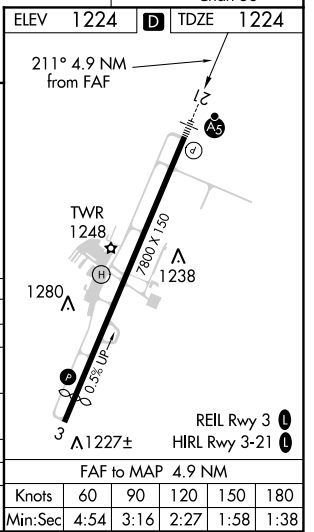
MALSR

MISSED APPROACH: Climb to 1800 then climbing right turn to 3200 direct CKB VOR/DME and hold, continue climb-in-hold to 3200.

ATIS 127.825	CLARKSBURG APP CON * 121.15 284.65	CLARKSBURG TOWER * 126.7 (CTAF) 0 257.925	GND CON 121.9	UNICOM 123.0
------------------------	--	---	-------------------------	------------------------



ELEV 1800	3200	CKB	HEPUG CKB [6.3] RADAR	ARCAT OM CKB [8.8] RADAR	FONZ INT CKB [16]	One Minute Holding Pattern
*LOC only.	*CKB	CKB [3.9]	2878	211°	211°	5600 3800
			*2020	2900		GS 3.00° TCH 60
			1.4 NM	1 NM	2.5 NM	7.2 NM
CATEGORY	A	B	C	D		
S-ILS 21		1424/24	200 (200-½)			
S-LOC 21	2020/24 796 (800-½)	2020/40 796 (800-¾)	2020-1¾ 796 (800-¾)	796 (800-1¾)		
C CIRCLING	2020-1 796 (800-1)	2040-1¼ 816 (900-1¼)	2320-3	1096 (1100-3)		
HEPUG FIX MINIMUMS (DME or RADAR REQUIRED)						
S-LOC 21	1740/24	516 (600-½)	1740/55	516 (600-1)		
C CIRCLING	1940-1 716 (800-1)	2040-1¼ 816 (900-1¼)	2320-3	1096 (1100-3)		



NE-4, 09 SEP 2021 to 07 OCT 2021

NE-4, 09 SEP 2021 to 07 OCT 2021