

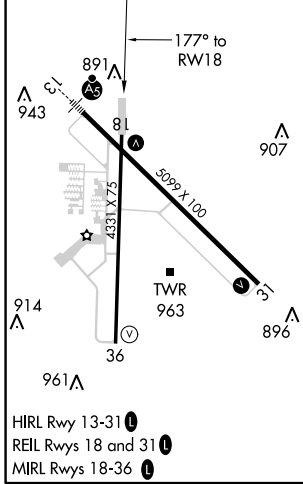
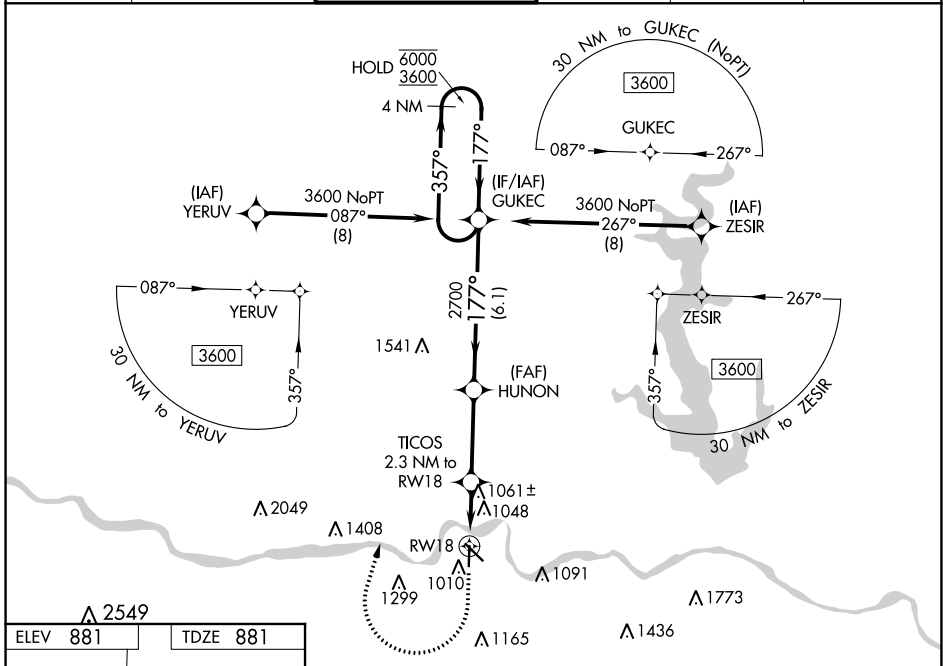
WAAS CH 53634 W18A	APP CRS 177°	Rwy Idg TDZE Apt Elev	4331 881 881
--	------------------------	-----------------------------	---

RNAV (GPS) RWY 18

PHILIP BILLARD MUNI (TOP)

RNP APCH.	▼ Rwy 18 helicopter visibility reduction below 3/4 SM NA. For uncompensated Baro-VNAV systems, LNAV/VNAV NA below -19°C or above 54°C.	MISSED APPROACH: Climb to 1500 then climbing right turn to 3600 direct GUKEC and hold.
-----------	---	--

ASOS 121.275	KANSAS CITY CENTER 123.8 343.7	TOPEKA TOWER * 118.7 (CTAF) 0 257.8	GND CON 121.9	CLNC DEL 121.9	UNICOM 122.95
------------------------	--	---	-------------------------	--------------------------	-------------------------



ELEV 881	TDZE 881	1500	3600	GUKEC	GUKEC	4 NM Holding Pattern
*LNAV only		*1.3 NM to RWY 18		GP 3.00° TCH 35		
RWY 18		1.3 NM		1 NM		3.3 NM
1.3 NM		1 NM		3.3 NM		6.1 NM
CATEGORY	A	B	C	D		
LPV DA	1174-1 293 (300-1)			NA		
LNAV/VNAV DA	1340-1 459 (500-1 1/2)			NA		
LNAV MDA	1320-1	439 (500-1)	1320-1 1/4	439 (500-1 1/2)		
CIRCLING	1360-1	1440-1	1600-2	719 (800-2)		
	479 (500-1)	559 (600-1)	719 (800-2)	NA		

NC-2, 09 SEP 2021 to 07 OCT 2021

NC-2, 09 SEP 2021 to 07 OCT 2021