

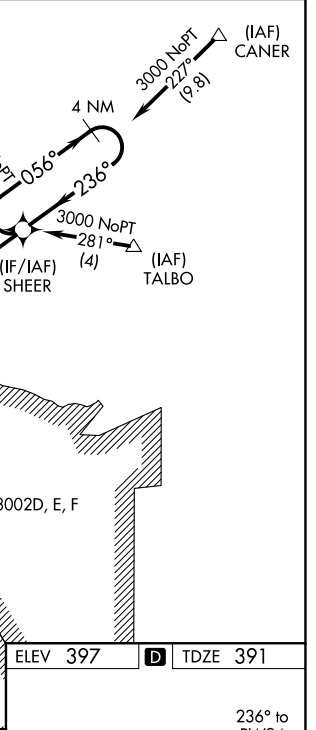
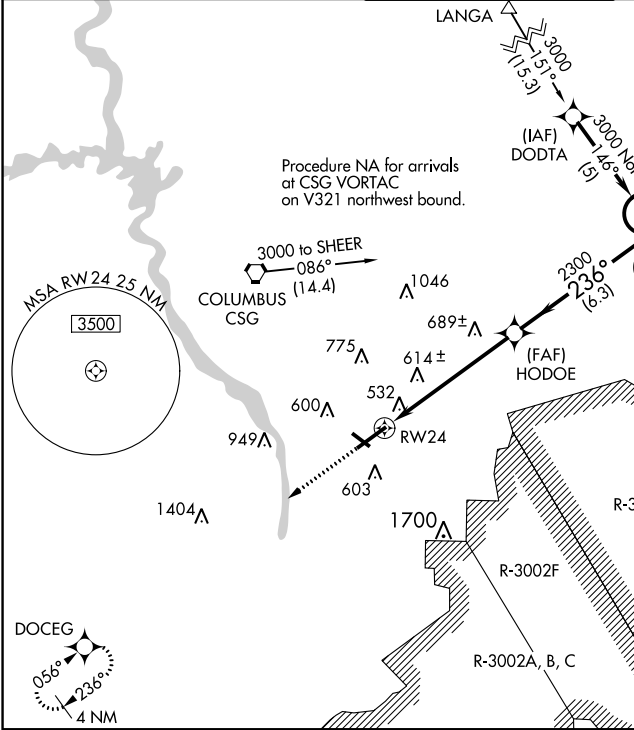
WAAS CH <b>45501</b> <b>W24A</b>	APP CRS <b>236°</b>	Rwy Idg <b>6997</b> TDZE <b>391</b> Apt Elev <b>397</b>
--	------------------------	---

# RNAV (GPS) RWY 24

COLUMBUS (CSG)

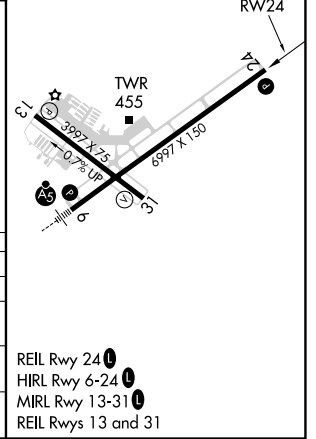
RNP APCH	For uncompensated Baro-VNAV systems, LNAV/VNAV NA below -19°C (-2°F) or above 54°C (130°F). Circling Rwy 13, 31 NA at night. Rwy 24 helicopter visibility reduction below ¼ SM NA.	MISSED APPROACH: Climb to 2500 direct DOCEG and hold.
----------	--	---

ATIS <b>127.75</b>	ATLANTA APP CON * <b>125.5 323.1</b>	COLUMBUS TOWER * <b>120.1</b> (CTAF) <b>0 257.8</b>	GND CON <b>121.9 348.6</b>	UNICOM <b>122.95</b>
-----------------------	---	--	-------------------------------	-------------------------



2500	DOCEG	VGSI and RNAV glidepath not coincident (VGSI Angle 3.00/TCH 64).
↑	✧	

CATEGORY	A	B	C	D
LPV DA		740-1 $\frac{1}{8}$	349 (400-1 $\frac{1}{8}$ )	
LNAV/VNAV DA		920-1 $\frac{3}{4}$	529 (600-1 $\frac{3}{4}$ )	
LNAV MDA	940-1	549 (600-1)	940-1 $\frac{5}{8}$	549 (600-1 $\frac{5}{8}$ )
CIRCLING	940-1	543 (600-1)	1140-2 $\frac{1}{4}$ 743 (800-2 $\frac{1}{4}$ )	1300-3 903 (1000-3)



SE-4, 09 SEP 2021 to 07 OCT 2021

SE-4, 09 SEP 2021 to 07 OCT 2021