

RNAV (GPS) RWY 6

COLUMBUS (CSG)

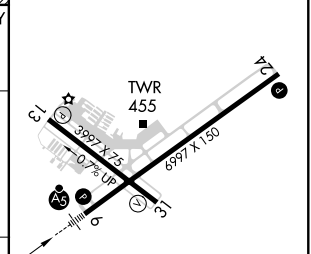
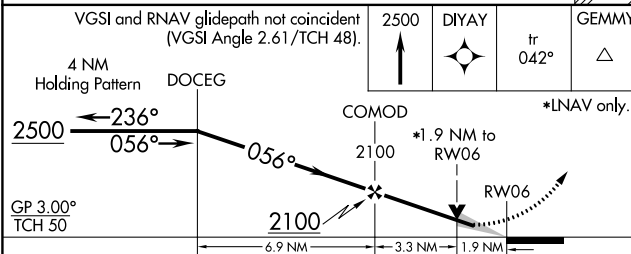
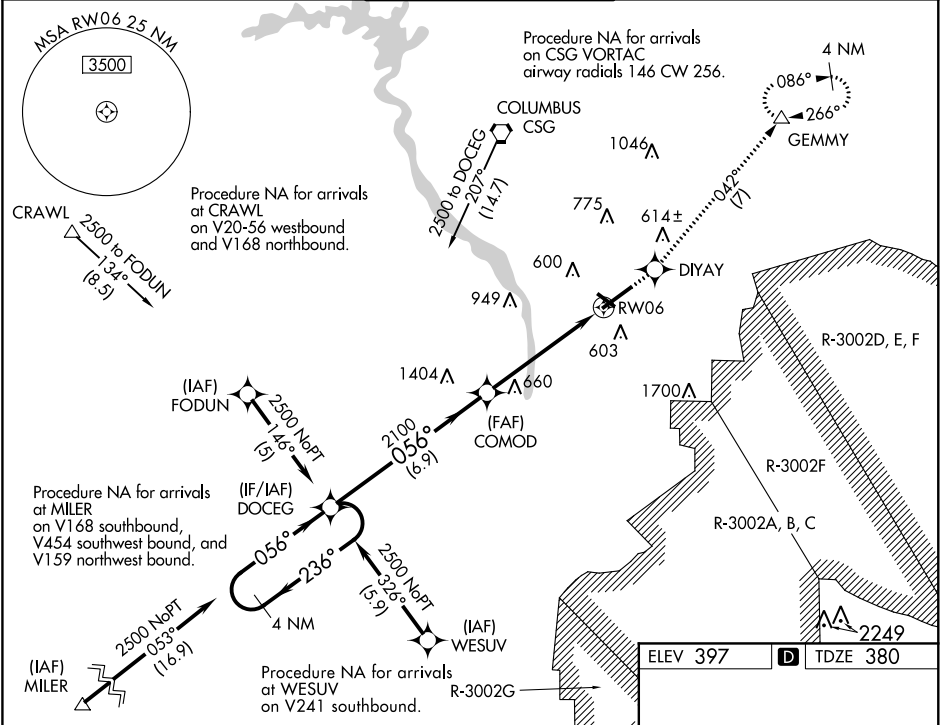
WAAS CH 40001 W06A	APP CRS 056°	Rwy Idg 6997 TDZE 380 Apt Elev 397
--	------------------------	---

▼ For uncompensated Baro-VNAV systems, LNAV/VNAV NA below -6°C (-22°F) or above 54°C (130°F).
▲ Circling Rwy 31 NA at night. DME/DME RNP-0.3 NA. For inop ALS, increase LPV all Cats visibility to RVR 5000.

MALSR

 MISSED APPROACH: Climb to 2500 direct DIYAY and on track 042° to GEMMY and hold.

ATIS 127.75	ATLANTA APP CON* 125.5 323.1	COLUMBUS TOWER* 120.1 (CTAF) 0 257.8	GND CON 121.9 348.6	UNICOM 122.95
-----------------------	--	--	-------------------------------	-------------------------



CATEGORY	A	B	C	D
LPV DA		674/24	294 (300-1/2)	
LNAV/VNAV DA		904-1 3/8	524 (600-1 3/8)	
LNAV MDA	960/24	580 (600-1/2)	960-1 1/4	580 (600-1 1/4)
CIRCLING	960-1	563 (600-1)	1140-2 1/4 743 (800-2 1/4)	1300-3 903 (1000-3)

REIL Rwy 24 **1**
 HIRL Rwy 6-24 **1**
 MRL Rwy 13-31 **1**
 REIL Rwy 13 and 31

SE-4, 09 SEP 2021 to 07 OCT 2021

SE-4, 09 SEP 2021 to 07 OCT 2021