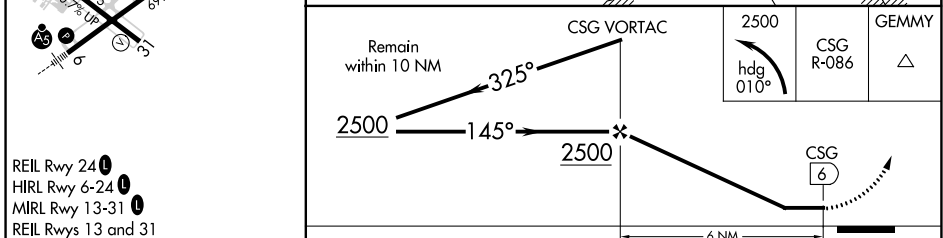
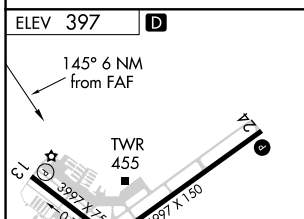
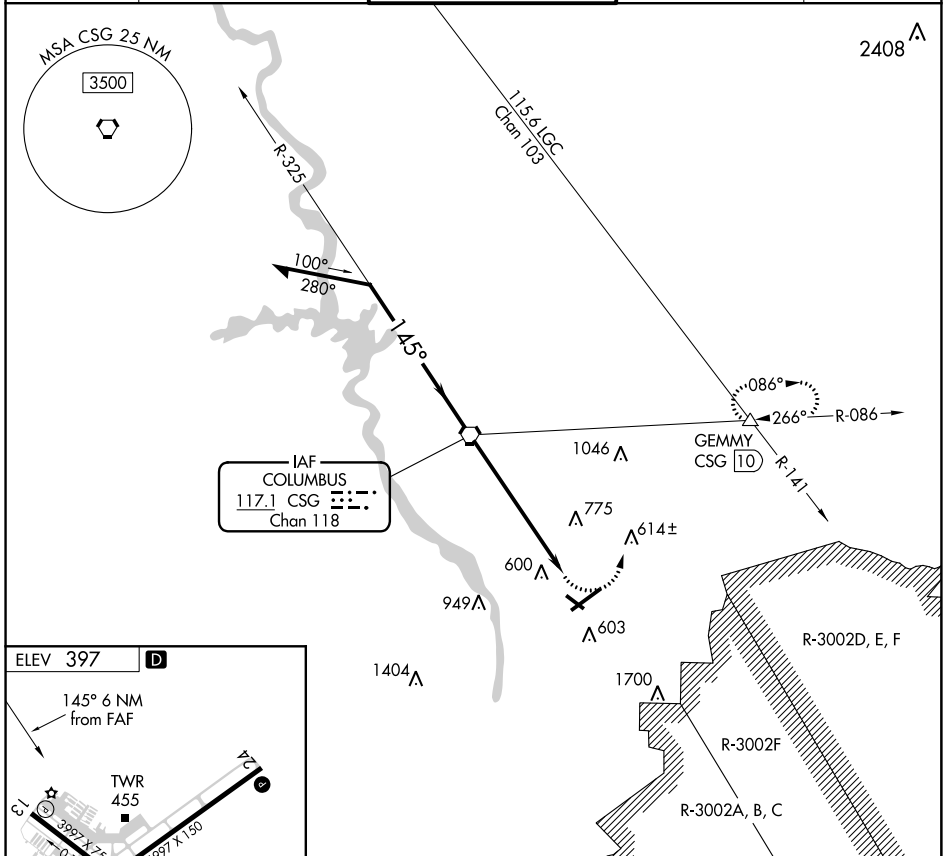


VORTAC CSG <b>117.1</b> Chan <b>118</b>	APP CRS <b>145°</b>	Rwy Idg TDZE Apt Elev	<b>N/A</b> <b>N/A</b> <b>397</b>
---	------------------------	--------------------------	--

**VOR-A**  
COLUMBUS (CSG)

**⚠** Circling Rwy 13, 31 NA at night. MISSED APPROACH: Climbing left turn to 2500 on heading 010° and CSG VORTAC R-086 to GEMMY INT/10 DME and hold.

ATIS <b>127.75</b>	ATLANTA APP CON * <b>125.5 323.1</b>	COLUMBUS TOWER * <b>120.1</b> (CTAF) <b>257.8</b>	GND CON <b>121.9 348.6</b>	UNICOM <b>122.95</b>
-----------------------	---	--	-------------------------------	-------------------------



- REIL Rwy 24  $\Delta$
- HIRL Rwy 6-24  $\Delta$
- MIRL Rwy 13-31  $\Delta$
- REIL Rwy 13 and 31

FAF to MAP 6 NM					
Knots	60	90	120	150	180
Min:Sec	6:00	4:00	3:00	2:24	2:00
CATEGORY	A	B	C	D	
CIRCLING	1060-1	663 (700-1)	1140-2¼ 743 (800-2¼)	1300-3 903 (1000-3)	

SE-4, 09 SEP 2021 to 07 OCT 2021

SE-4, 09 SEP 2021 to 07 OCT 2021